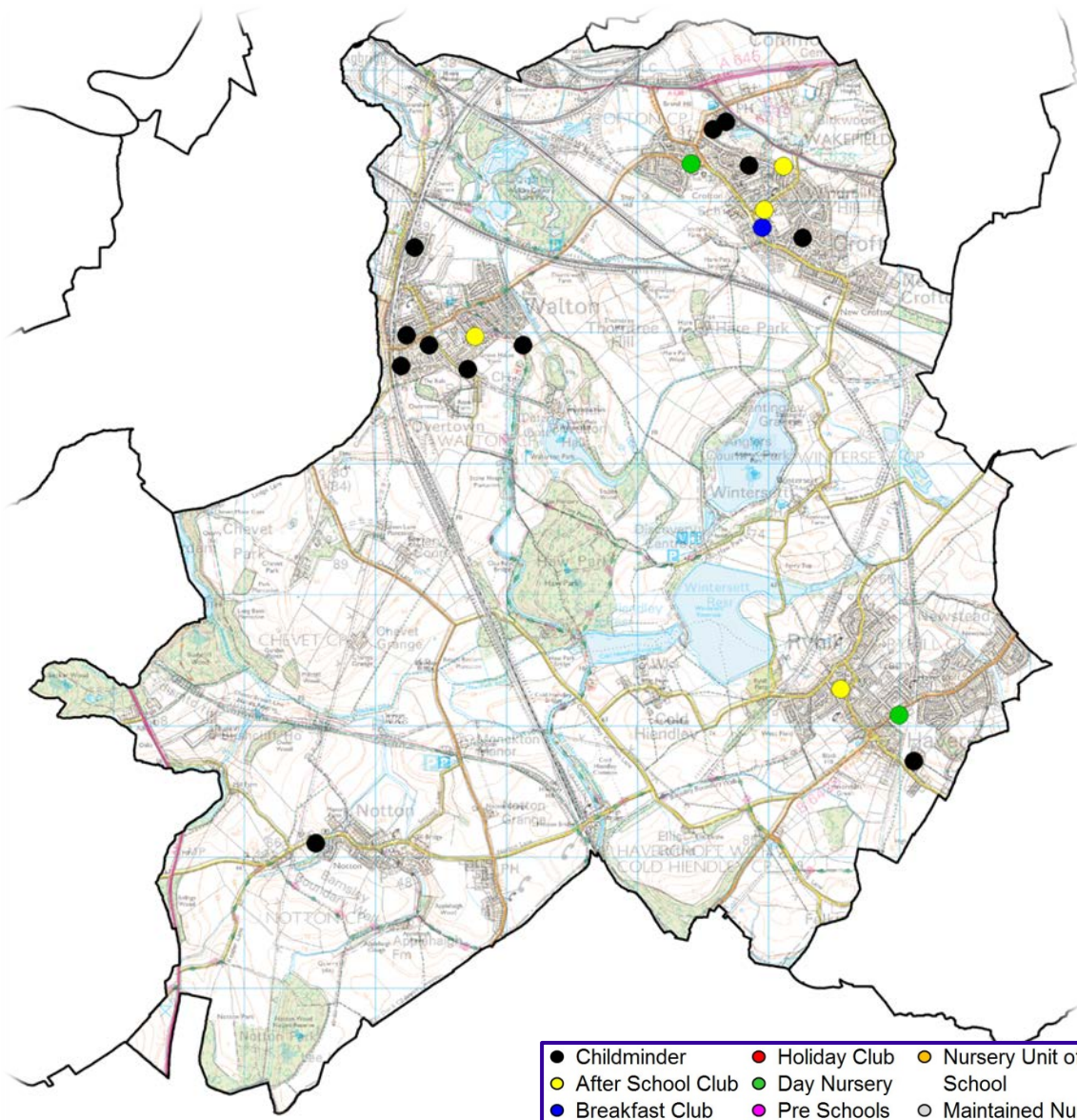
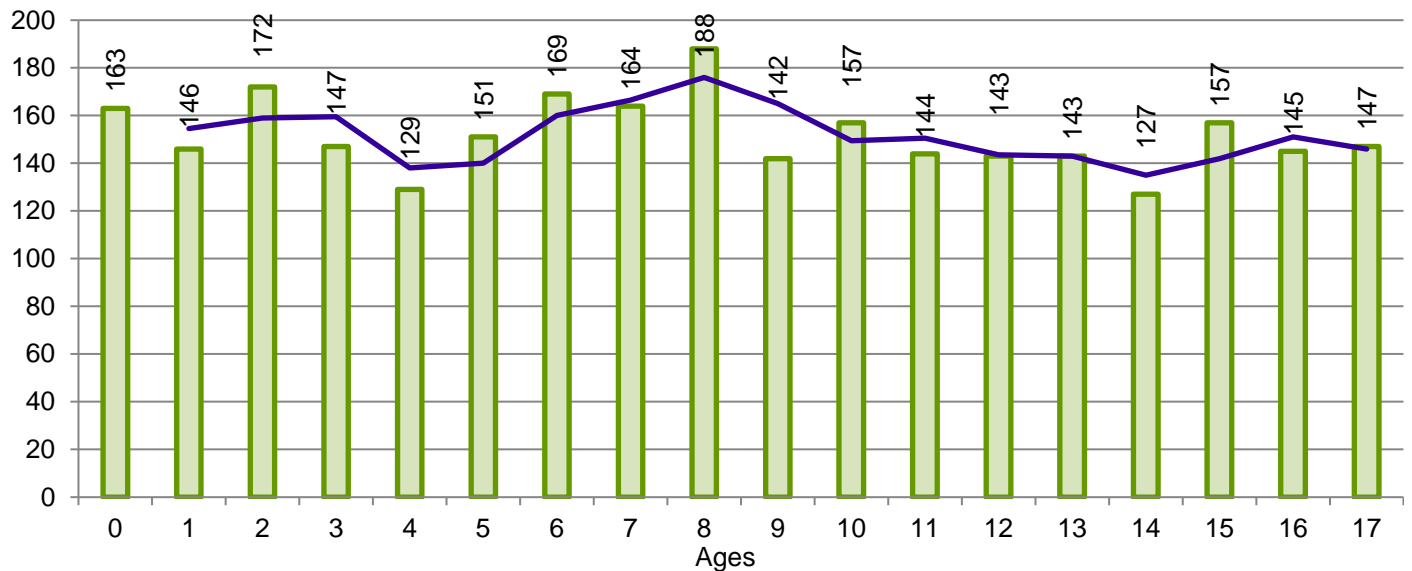


Ward 5 Crofton, Ryhill and Walton



Children by Age Group (2,734):



Current Ofsted Judgements

There are 8 home based providers and 1 group based provider rated 'Outstanding' or 'Good' by Ofsted. There are 3 providers at 'Initial Inspection'.

Childcare Costs - Spring Term 2018

Provider Type	Care Type	Lowest	Highest	Average	District Average
Home Based	Per Hour	£3.00	£5.00	£3.73	£3.99
Group Based 0 to U2 (Full Day)	Per Day	£35.00	£40.00	£37.50	£41.64
Group Based 2 to U3 (Full Day)	Per Day	£31.00	£40.00	£35.50	£39.79
Group Based 3+ (Full Day)	Per Day	£31.00	£40.00	£35.50	£39.94
Group Based 0 to U2 (Part Time)	25 Hours	£90.00	£101.00	£95.50	£109.98
Group Based 2 to U3 (Part Time)	25 Hours	£77.60	£100.00	£88.80	£104.55
Group Based 3+ (Part Time)	25 Hours	£77.60	£100.00	£88.80	£103.53
Holiday Clubs	Per Day	£15.00	£31.40	£31.00	£28.99
OOS Clubs Before School	Per Session				£5.45
OOS Clubs After School	Per Session	£7.25	£11.70	£7.25	£8.53
School Breakfast Clubs	Per Session	£0.50	£3.00	£2.16	£2.54

Children aged 0 to Under 5

Term Time		Providers	Places	Vacancies				Children Per Place
				FTE	Average Daily	EYFE Providers		
						15 Hour Sessions	30 Hour Sessions	
Home Based	0 to U2	11	17	4	4			6.76
	2 to U3	10	11	3	4	13		
	3 to U5	10	13	3	3		3	
Group Based	0 to U2	2	15	1	2			
	2 to U3	2	28	1	3	9		
	3 to U5	2	28	0	4		8	
School Places 3-U5		5	286			102		
Total:			398	12	20	124	11	

School Holidays		Providers	Places	Vacancies		0 to U5's	Children Per Place	
				FTE	Average Daily			
Home Based	0 to U2	6	6	2	2	757	10.51	
	2 to U3	5	5	1	0			
	3 to U5	6	7	1	2			
Group Based	0 to U2	2	15	1	2			
	2 to U3	2	28	1	3			
	3 to U5	2	28	0	See Term Time			
Total:			89	6	9			

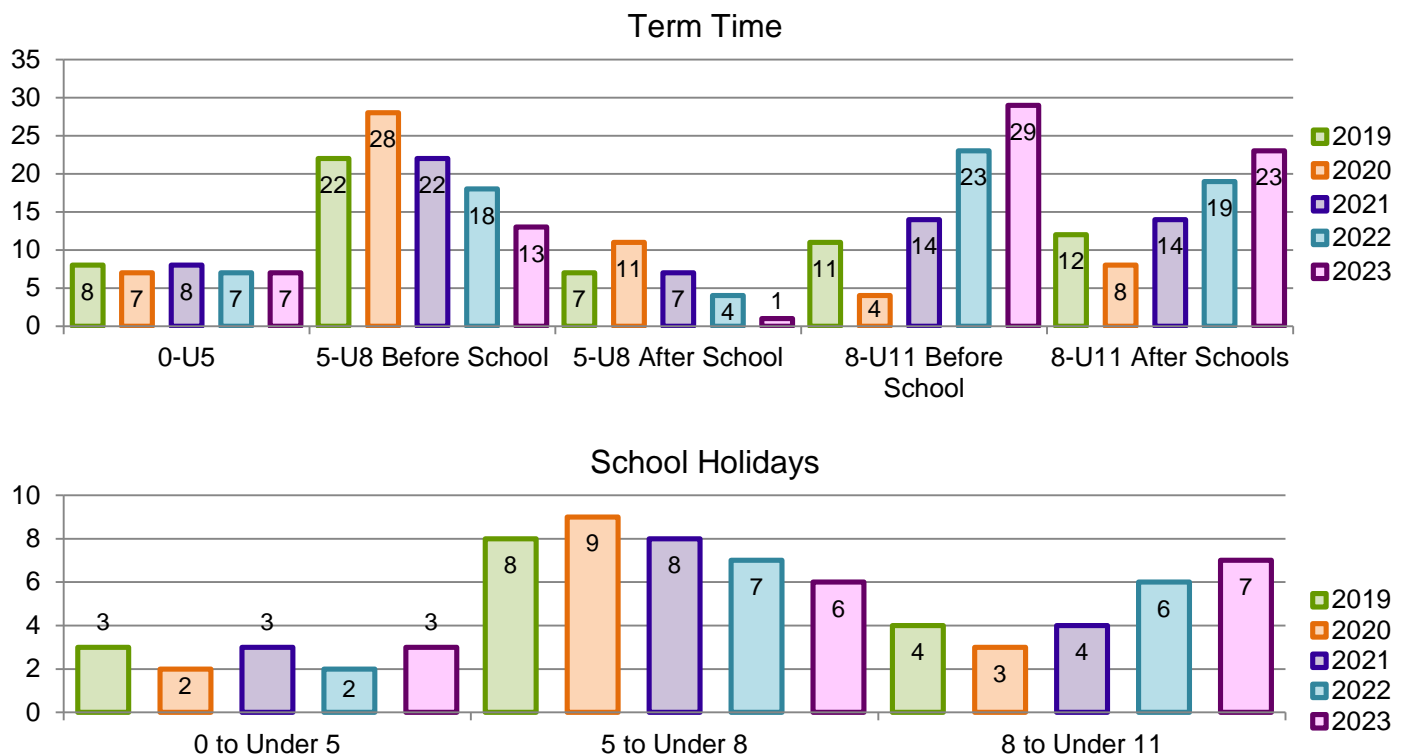
Children aged 5 to Under 8

Type		Providers	Places	Children	
				Total	Per Place
Before School	Home Based	11	38	484	3
	Group Based	7	104		
	Total:		142		
After School	Home Based	11	38		
	Group Based	5	55		
	Total:		93		
School Holidays	Home Based	7	24	15	
	Group Based	1	9		
	Total:		33		

Children aged 8 to Under 11

Type		Providers	Places	Children	
				Total	Per Place
Before School	Home Based	6	12	487	3
	Group Based	6	81		
	Total:		93		
After School	Home Based	6	22		5
	Group Based	5	54		
	Total:		76		
School Holidays	Home Based	5	14	17	
	Group Based	1	14		
	Total:		28		

Ward 5 Forecast Vacancies for 2019 – 2023



Early Year Free Entitlement Take Up of Provision for Two, Three and Four Year Olds

There are a total of -4 two year old vacancies in Ward 5 and 69 two year old children became eligible for a place in the summer term 2018.

2YO	EYFE Take Up of Provision	Actual	Forecast			
		2018	2019	2020	2021	2022
	Number of Eligible 2YO	69	59	66	65	64
	Vacancies based on 80% Take Up	-4	-25	-30	-29	-28
	Vacancies based on 100% Take Up	-18	-37	-44	-42	-41

There are a total of 284 three and four year old part time places available in Ward 5 and 242 three and four year olds have taken-up an EYFE place (115%). 191 children take up their EYFE place in schools (63.9%) and 103 children take up their EYFE place in the PVIC sector (32%). 66 children take up extended entitlement (32%) which is slightly lower than the district average (35%).

3YO and 4YO	Type of Provider	Places Available	Part Time Places					
			Take Up					
			Universal	Extended				
	Childminder	9	5	9				
	Day Nursery	28	35	35				
	School Nursery	208	194	0				
	School Nursery – 30 Hours	39		13				
	Independent School	0	7	4				
	After School	0	1	5				
	Total:	284	242	66				
3YO and 4YO	Projected Take Up of Provision and Vacancies	2018/19			2019/20			
		Autumn	Spring	Summer	Autumn	Spring	Summer	
		3YO & 4YO Children	147	59	39	172	48	37
		15 Hours – 100% Take Up	92	33	-6	67	19	-18
		15 Hours – Ward Take Up (115%)	70	24	-12	41	12	-24
		30 Hours	22	2	-11	10	-6	-18
		Surplus / Shortfall	92	26	-23	51	5	-42
	Projected Take Up of Provision and Vacancies	2020/21			All 3 & 4YO PVIC places are used as extended entitlement places (30 hours). To determine whether there is surplus/shortfall, the following method has been applied: i. Surplus 30 hour places less next terms predicted 30 hour children ii. Places remaining multiplied by 2 (30 hour places can be used twice) iii. Places remaining less 15 hour ward take up places.			
		Autumn	Spring	Summer				
		3YO & 4YO Children	146	55				34
		15 Hours – 100% Take Up	93	38				4
		15 Hours – Ward Take Up (115%)	71	30				-1
		30 Hours	19	0				-11
	Surplus / Shortfall	90	29	-12				

The forecast numbers does forecast pressures in Ward 5 for two, three and four year old places in the summer term. Please refer to the Childcare Sufficiency Action Plan on page 258.