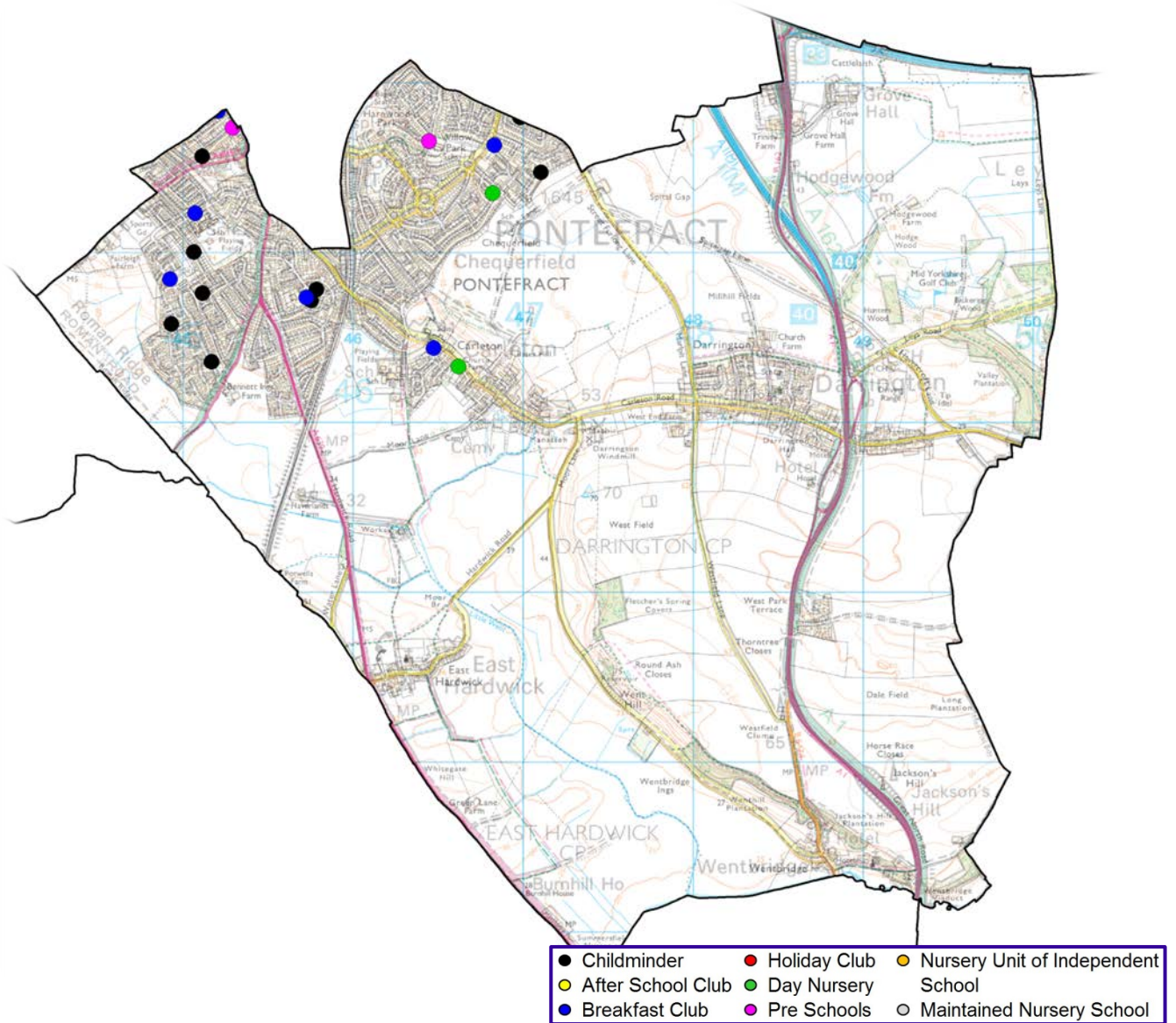
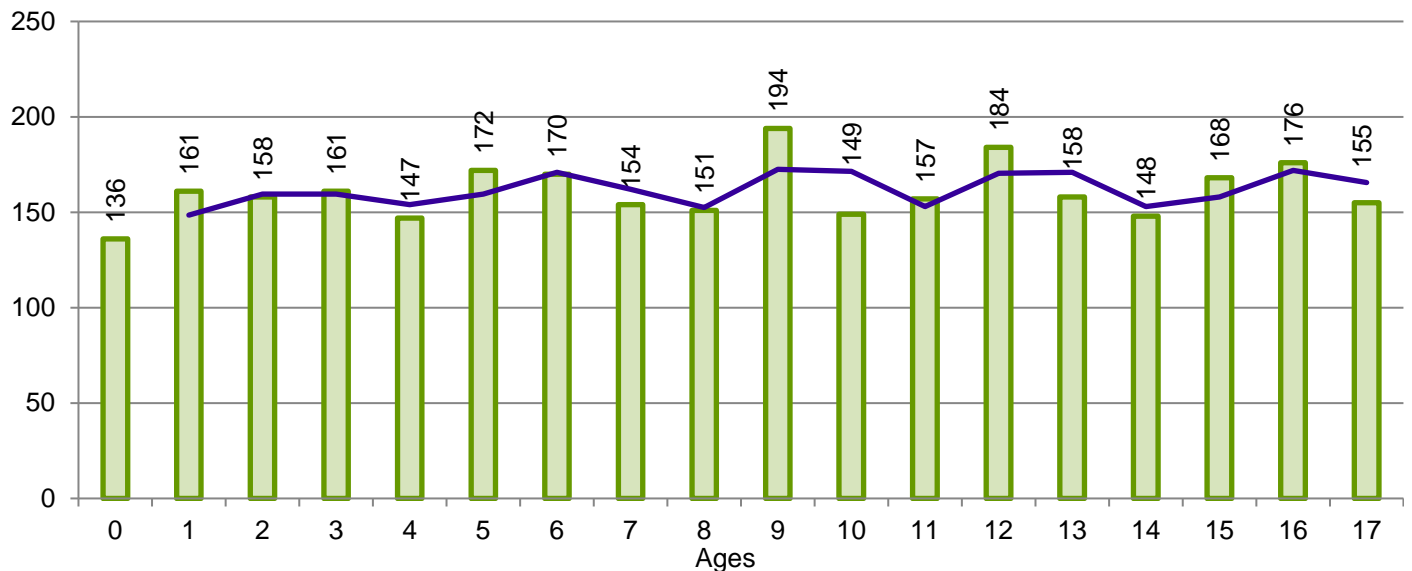


# Ward 13 Pontefract South



## Children by Age Group (2,899):



## Current Ofsted Judgements

There are 10 home based providers and 3 group based providers rated 'Outstanding' or 'Good' by Ofsted. There is 1 provider at 'Initial Inspection'.

## Childcare Costs - Spring Term 2018

Provider Type	Care Type	Lowest	Highest	Average	District Average
Home Based	Per Hour	£4.00	£4.00	£4.00	£3.99
Group Based 0 to U2 (Full Day)	Per Day	£35.00	£35.00	£35.00	£41.64
Group Based 2 to U3 (Full Day)	Per Day	£29.25	£35.00	£32.13	£39.79
Group Based 3+ (Full Day)	Per Day	£29.25	£35.00	£35.00	£39.94
Group Based 0 to U2 (Part Time)	25 Hours	£87.50	£87.50	£87.50	£109.98
Group Based 2 to U3 (Part Time)	25 Hours	£71.70	£87.50	£79.73	£104.55
Group Based 3+ (Part Time)	25 Hours	£83.20	£87.50	£85.35	£103.53
Holiday Clubs	Per Day	£20.00	£20.00	£20.00	£28.99
OOS Clubs Before School	Per Session				£5.45
OOS Clubs After School	Per Session	£7.00	£7.00	£7.00	£8.53
School Breakfast Clubs	Per Session	£2.00	£4.00	*£3.00	£2.54

\* Denotes 10% above the district average.

## Children aged 0 to Under 5

Term Time		Providers	Places	Vacancies				Children Per Place
				FTE	Average Daily	EYFE Providers		
						15 Hour Sessions	30 Hour Sessions	
Home Based	0 to U2	8	11	0	1			4.46
	2 to U3	7	10	0	0	0		
	3 to U5	6	9	0	0		0	
Group Based	0 to U2	1	9	0	1			
	2 to U3	3	65	5	10	33		
	3 to U5	3	67	2	5		54	
School Places 3-U5		5	182			40		
<b>Total:</b>			<b>353</b>	<b>7</b>	<b>17</b>	<b>73</b>	<b>54</b>	

School Holidays		Providers	Places	Vacancies		0 to U5's	Children Per Place
				FTE	Average Daily		
Home Based	0 to U2	8	9	2	1	763	6.20
	2 to U3	7	8	1	0		
	3 to U5	6	7	1	1		
Group Based	0 to U2	1	9	0	1		
	2 to U3	3	41	5	10		
	3 to U5	3	62	0	See Term Time		
<b>Total:</b>			<b>136</b>	<b>9</b>	<b>13</b>		

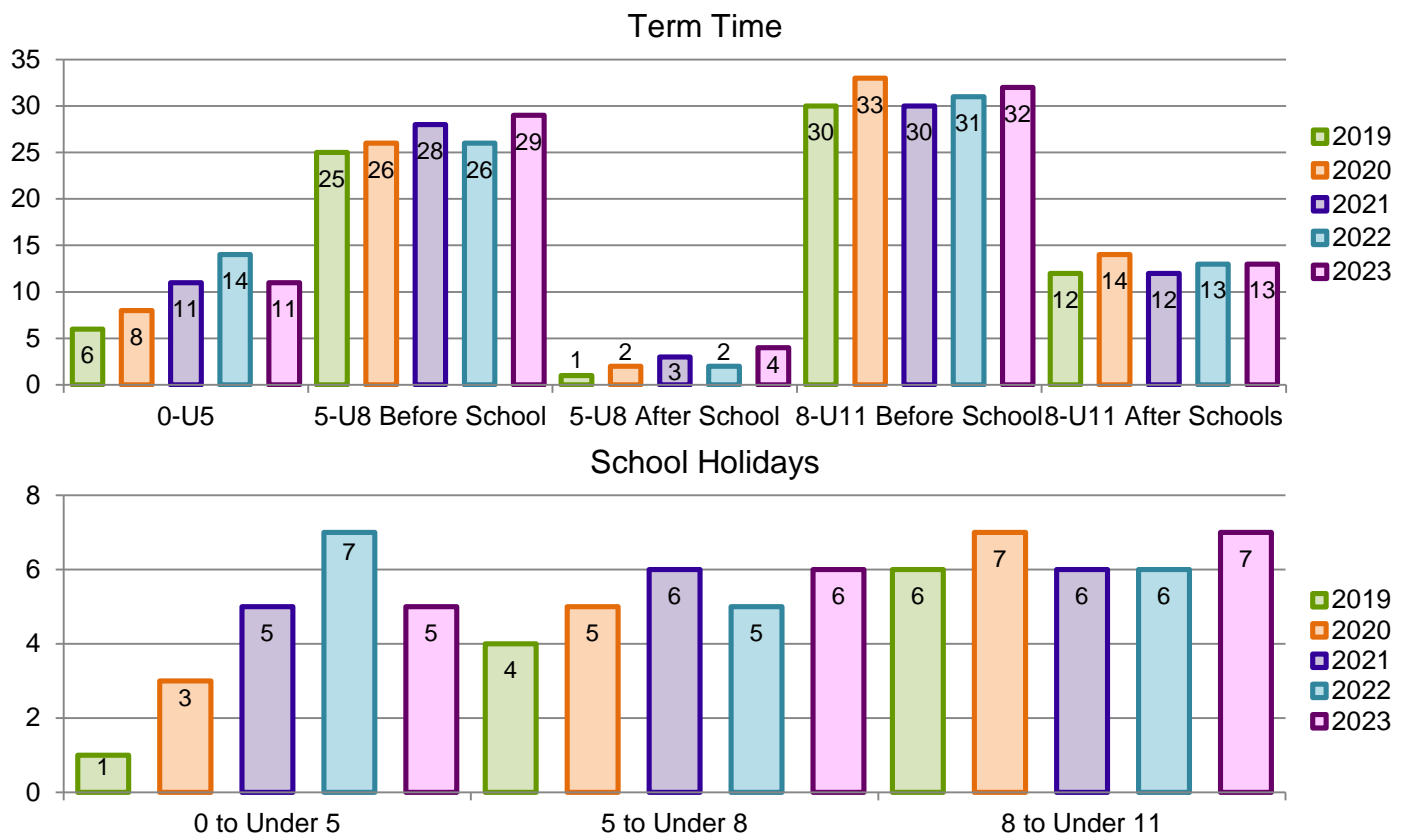
**Children aged 5 to Under 8**

Type		Providers	Places	Children		
				Total	Per Place	
Before School	Home Based	9	23	496	8	
	Group Based	2	61			
	<b>Total:</b>		<b>84</b>			
After School	Home Based	9	23		496	11
	Group Based	4	21			
	<b>Total:</b>		<b>44</b>			
School Holidays	Home Based	9	23	496		13
	Group Based	3	16			
	<b>Total:</b>		<b>39</b>			

**Children aged 8 to Under 11**

Type		Providers	Places	Children		
				Total	Per Place	
Before School	Home Based	6	9	494	8	
	Group Based	6	72			
	<b>Total:</b>		<b>81</b>			
After School	Home Based	6	14		494	11
	Group Based	2	17			
	<b>Total:</b>		<b>31</b>			
School Holidays	Home Based	7	15	494		24
	Group Based	2	6			
	<b>Total:</b>		<b>21</b>			

**Ward 13 Forecast Vacancies for 2019 – 2023**



## Early Year Free Entitlement Take Up of Provision for Two, Three and Four Year Olds

There are a total of 34 two year old vacancies in Ward 13 and 55 two year old children became eligible for a place in the summer term 2018.

2YO	EYFE Take Up of Provision	Actual	Forecast			
		2018	2019	2020	2021	2022
	Number of Eligible 2YO	55	60	57	60	57
	Vacancies based on 80% Take Up	-10	-3	4	0	0
	Vacancies based on 100% Take Up	-21	-14	-5	-11	-10

There are a total of 255 three and four year old part time places available in Ward 13 and 289 three and four year olds have taken-up an EYFE place (98.3%). 191 children take up their EYFE place in schools (63.9%) and 103 children take up their EYFE place in the PVIC sector (32%). 97 children take up extended entitlement (41%) which is higher than the district average (35%).

3YO and 4YO	Type of Provider	Places Available	Part Time Places					
			Take Up					
			Universal	Extended				
	Childminder	6	11	13				
	Day Nursery	54	94	59				
	School Nursery	65	164	0				
	School Nursery – 30 Hours	117		16				
	Independent School	0	1	0				
	Pre School	13	19	9				
	<b>Total:</b>	<b>255</b>	<b>289</b>	<b>97</b>				
3YO and 4YO	Projected Take Up of Provision and Vacancies	2018/19			2019/20			
		Autumn	Spring	Summer	Autumn	Spring	Summer	
		3YO & 4YO Children	161	48	38	158	60	35
		15 Hours – 100% Take Up	5	-43	-81	8	-52	-87
		15 Hours – Ward Take Up (98.3%)	-24	-52	-88	-20	-63	-93
		30 Hours	65	45	30	63	38	24
		Surplus / Shortfall	41	-7	-58	43	-25	-69
	Projected Take Up of Provision and Vacancies	2020/21			All 3 & 4YO PVIC places are used as extended entitlement places (30 hours). To determine whether there is surplus/shortfall, the following method has been applied: i. Surplus 30 hour places less next terms predicted 30 hour children ii. Places remaining multiplied by 2 (30 hour places can be used twice) iii. Places remaining less 15 hour ward take up places.			
		Autumn	Spring	Summer				
		3YO & 4YO Children	161	46				33
		15 Hours – 100% Take Up	5	-41				-74
		15 Hours – Ward Take Up (98.3%)	-24	-49				-80
		30 Hours	62	43				30
		Surplus / Shortfall	38	-6				-50

The forecast numbers does forecast pressures in Ward 13 for two, three and four year old places in the spring and summer term. Please refer to the Childcare Sufficiency Action Plan on page 258.