

Appropriate Assessment of the
Core Strategy and
Development Policies
Development Plan Documents



Local Development Framework

Appropriate Assessment of the
Core Strategy and
Development Policies
Development Plan Documents

Contents

1 Introduction	2
2 Appropriate Assessment of the Core Strategy and Development Policies Development Plan Documents	3
Denby Grange Colliery Ponds - Special Area of Conservation	5
3 Policy Background	7
Local Development Framework	7
Other Relevant Strategies	7
4 Appropriate Assessment Tables	10
Issues & Options	11
Preferred Options - Core Strategy Policies	22
Preferred Options - Development Policies	30
Submission Options - Core Strategy & Development Policies	36
5 Conclusions and Recommendations	46

Appendix

1 Council's Response to Consultation	47
---	-----------

1 Introduction

- 1.1 Articles 6(3) and 6(4) of the Habitats Directive ⁽¹⁾ require Appropriate Assessment to be carried out for plans and projects that are likely to affect a Natura 2000 site ⁽²⁾ such as a Special Area of Conservation (SAC), a Special Protection Area (SPA) or a Ramsar Site. Appropriate Assessment (AA) is a process which assesses the implications and potential affects of plans such as the Local Development Framework on the conservation objectives of the site, and determines whether or not policies or proposals will significantly affect the integrity of these objectives. The process or stages of AA are outlined below.

Stages of Appropriate Assessment

1. **Screening.** Determines whether the LDF is likely to have a significant affect on any European sites and whether a full AA is needed. Screening focuses on avoidance and mitigation of impacts.
2. **Appropriate Assessment.** Determines whether, in view of the sites conservation objectives, the plan would have a significant affect on the integrity of the site. The emerging LDF should be developed to ensure that significant affects on European sites are avoided. This will render Stages 3 and 4 unnecessary.
3. **Assessment of Alternative Solutions.** Where the LDF is assessed as having an adverse affect on the integrity of a site, alternatives should be examined. Alternatives that avoid adverse affects on European sites should be developed and considered from the earliest stages.
4. **Assessment where no alternative solutions remain and where adverse impacts remain.** Compensation measures are required for any adverse affects, and are permitted only where the plan would be necessary for imperative reasons of overriding public interest.

Links to the Sustainability Appraisal of the LDF

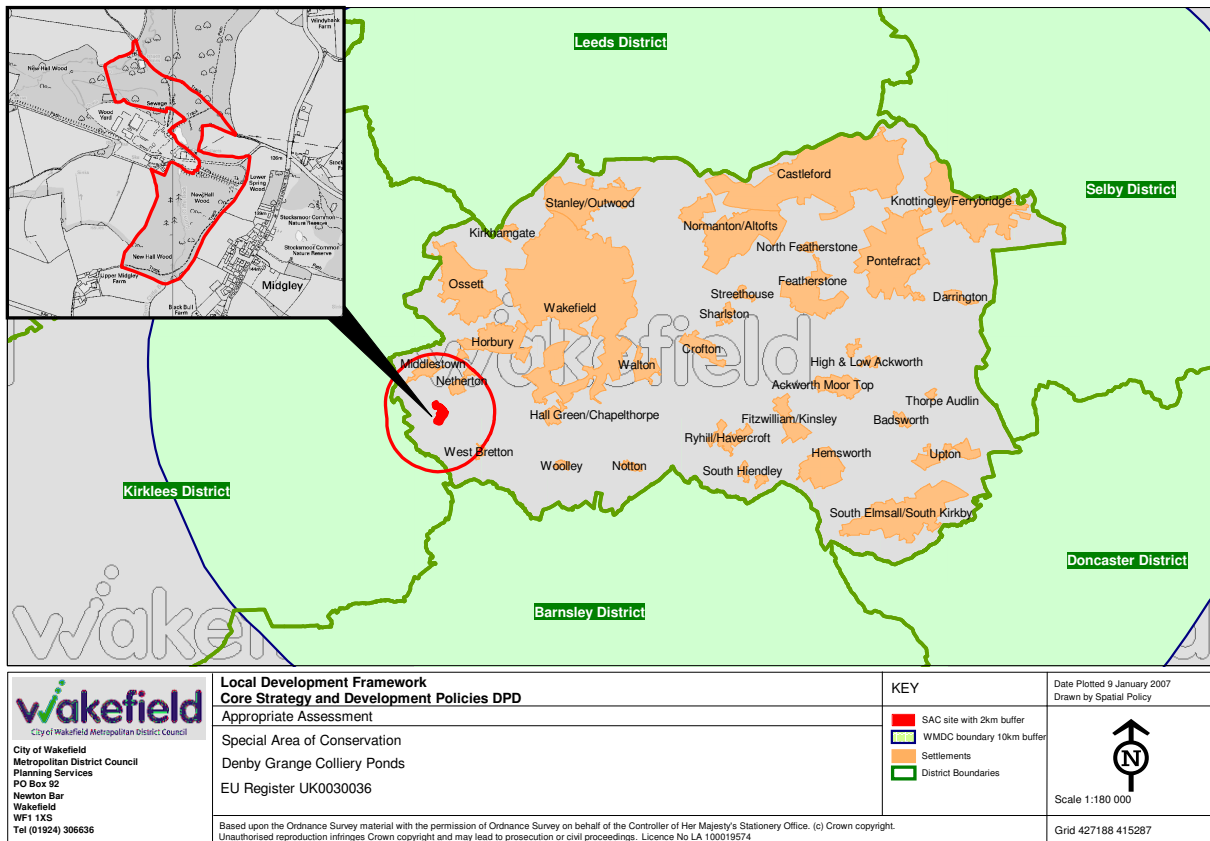
- 1.2 Strategic Environmental Assessment (SEA) involves the systematic identification and evaluation of the impacts of a plan or programme on the environment. Sustainability Appraisal (SA) broadens the SEA to also address economic and social impacts to encompass the three dimensions of sustainable development. All LDF Development Plan Documents (DPDs) and Supplementary Planning Documents (SPDs) are required to have an SA under the Planning and Compulsory Purchase Act 2004.
- 1.3 There are clear parallels between AA, SA and SEA since all three are processes for assessing and minimising the environmental and sustainability impacts of plans. It is generally accepted that AA and SA/SEA should be undertaken in parallel, however AA requires a clear, separate statement for each plan or DPD. The following AA appraisal is consistent with that carried out for the SA of the LDF Core Strategy and Development Policies DPDs .

1 Council Directive 92/43/EEC on the conservation of natural habitats and of wild fauna and flora

2 Natura 2000 sites are those identified as sites of Community importance under the Habitats Directive or classified as special protection areas (SPA's) under the Birds Directive 79/409/EEC

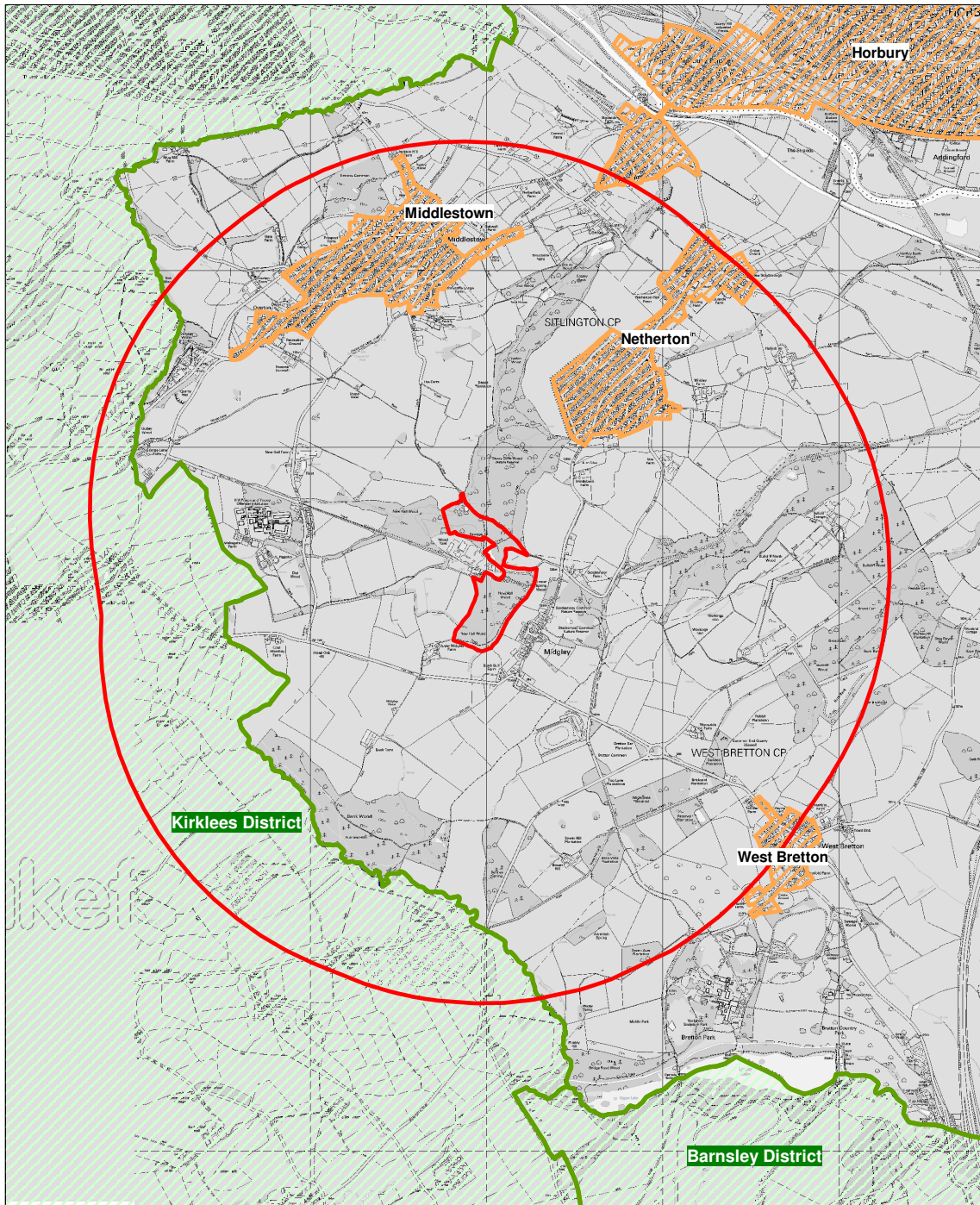
2 Appropriate Assessment of the Core Strategy and Development Policies Development Plan Documents







2.1 The scope of this AA is to appraise the potential impact of policies and proposals in the Core Strategy and Development Policies Development Plan Documents (DPDs). The DPDs cover the geographical area of Wakefield Metropolitan District. Within the District there is one designated European site, Denby Grange Colliery Ponds SAC. There are no neighbouring Natura 2000 sites within 10 km of the District boundary.



Map 1 Location of SAC in Wakefield District

2.2 Denby Grange Colliery Ponds and New Hall Wood are also a designated SSSI and are within the Green Belt and Wildlife Habitat Network. New Hall Wood is also designated Ancient Woodland. In consultation with Natural England a buffer zone of 2km has been established around the SAC.



 <p>City of Wakefield Metropolitan District Council Planning Services PO Box 92 Newton Bar Wakefield WF1 1XS Tel (01924) 306636</p>	<p>Local Development Framework Core Strategy and Development Policies DPD</p>		<p>Plotted 9 January 2007 Drawn by Spatial Policy</p>
	<p>Appropriate Assessment</p> <p>Special Area of Conservation Denby Grange Colliery Ponds EU Register UK0030036</p>	<p>KEY</p> <ul style="list-style-type: none">  SAC site with 2km buffer  WMDC boundary 10km buffer  Settlements  District Boundaries 	 <p>Scale 1:30 000</p>
<p>Based upon the Ordnance Survey material with the permission of Ordnance Survey on behalf of the Controller of Her Majesty's Stationery Office. (c) Crown copyright. Unauthorised reproduction infringes Crown copyright and may lead to prosecution or civil proceedings.</p>		<p>Grid 427188 415287</p> <p>Licence No LA 100019574</p>	

Map 2 Denby Grange Colliery Ponds SAC

Determining the factors that support the integrity of the SAC

- 2.3 The purpose of the AA is to determine whether any LDF proposal/policy directly or indirectly affects the integrity of the SAC. Integrity is described in Circular 06/2005: Bio-diversity and Geological Conservation as: "*The site's coherence, ecological structure and function across its whole area that enables it to sustain the habitat, complex of habitats and/or the levels of population of species for which it was classified*". The integrity of the SAC relies on the maintenance of the environment which will sustain its qualifying features and ensure their continuing viability, which includes those environmental conditions which enable key ecological processes and functions to persist. These would include maintaining vegetation, topographical features and water quality.

Denby Grange Colliery Ponds - Special Area of Conservation

Reasons for designation

- 2.4 Denby Grange Colliery Ponds were designated on 1 April 2005. The site is located in the valley of Stony Cliffe Beck, a tributary of the River Calder, which is within south west Wakefield near the hamlet of Midgley. The villages of Middlestown, Netherton and West Bretton are within 2 km of the SAC. Denby Grange Colliery Pond was created by coal mining activity and is surrounded by replanted ancient woodland with adjacent anthropogenic habitat associated with the previous mining activities. The site covers an area of 18.53 ha and supports the largest known breeding colony of great crested newt *Triturus cristatus* in West Yorkshire. A large new pond was created recently to help support the population. The two breeding ponds have associated terrestrial habitat of mainly birch and oak dominated woodland and rough grassland. The site also contains substantial populations of smooth newt *Triturus vulgaris*, palmate newt *Triturus helveticus*, common frog *Rana temporaria* and common toad *Bufo bufo* making it the most outstanding amphibian assemblage in West Yorkshire.

Types of operation likely to damage the SAC

- Cultivation including ploughing, rotovating, harrowing or re-seeding
- The introduction of grazing and changes in grazing regime (including type of stock, intensity or seasonal pattern of grazing)
- The introduction of stock feeding and changes in stock feeding practice
- Mowing or other methods of cutting vegetation and changes in the mowing or cutting regime
- Application of manure, fertilizers or lime
- Application of Pesticides and herbicides
- Dumping, spreading or discharge of any materials
- Burning and changes in the pattern or frequency of burning
- The release of any wild, feral or domestic animal*, plant or seed
- The killing or removal of any wild animal*, including pest control
- The destruction, displacement, removal or cutting of any plant or plant remains, including tree, shrub, herb, dead or decaying wood, moss, lichen, leaf-mould etc.
- The introduction of and changes in tree and/or woodland management including afforestation, planting, felling, thinning and coppicing
- Drainage (including gripping and the use of mole, tile, tunnel or other artificial drains)
- Modification of the structure of water courses (eg streams, ditches, drains) including their banks and beds, as by any re-alignment, regarding and dredging
- Management of aquatic and bank vegetation for drainage purposes
- The changing of water levels and tables and water utilisation (including irrigation, storage and abstraction from existing water bodies through boreholes)
- Infilling of ditches, drains, ponds, pools, marshes or pits
- The introduction of and changes in freshwater fishery production and/or management (including sporting fishing and angling)
- Extraction of minerals including coal, clay, topsoil, sub-soil and spoil

- Construction, removal or destruction of roads, tracks, walls, fences, herdstands, banks, ditches or other earthworks, or the laying, maintenance or removal of pipelines and cables above or below ground
- Storage of materials
- Erection of permanent or temporary structures, or the undertaking of engineering works, including drilling
- Modification of natural and man-made features, clearance of boulders, large stones or loose rock and battering, buttressing or grading cuttings, infilling of pits and quarries
- Use of vehicles or craft likely to damage features of interest
- Recreational or other activities likely to damage features of interest
- The introduction of, and changes in, game and wildfowl management and hunting practice.

*animal includes any mammal, reptile, amphibian, bird, fish or invertebrate

Site vulnerability

- 2.5 No real problems currently exist. The public footpath has been re-routed away from the pond. A new pond has been created to stabilise the Great crested newt population. The site's owners have made an agreement with the Forestry Commission to manage the terrestrial habitat.

3 Policy Background

Local Development Framework

- 3.1 The LDF includes strategies, policies and proposals for the development and use of land in the Wakefield District for the period to 2026. The LDF takes account of national planning policy and is in general conformity with the Regional Spatial Strategy (RSS) which now forms part of Wakefield's development plan. New RSS is in the later stages of preparation and account has been taken of its proposals although changes may still be made by the Secretary of State which will, in due course, need to be reflected in the LDF.
- 3.2 In addition the LDF has a key role in helping co-ordinate and deliver other strategies at regional, district and local level. The LDF is also closely linked to Wakefield District Partnership's Community Strategy, addressing issues which relate to land use and development in different places, with the overall intention of making Wakefield District a more attractive and prosperous place to live in.

Other Relevant Strategies

Regional Spatial Strategy

- 3.3 The Regional Spatial Strategy for Yorkshire & the Humber to 2016 (RSS) issued in December 2004 provides the regional policy context for the preparation of the LDF. New RSS is currently being prepared by the Yorkshire & Humber Assembly. The strategy and policies of the LDF must generally conform to the RSS and recent legislative changes ⁽³⁾ mean that the RSS now forms part of Wakefield's statutory development plan, alongside the UDP.
- 3.4 RSS sets out the number of houses to be provided in each local authority area, the regional transport strategy, sub-regional targets for renewable energy production and waste recycling and policies on a range of topics such as climate change and sustainable construction. These will be updated in the new RSS.
- 3.5 New RSS proposes overall regional policies providing direction and the rationale for sub-area policies, housing requirement figures and the approach to employment land. These will be based around a Regional Settlement Hierarchy. Regional and Sub-Regional Cities (Wakefield) will be the prime focus for housing, employment, shopping, leisure, education, health and cultural activities and facilities. Principal Service Towns (including main urban areas such as Castleford and Pontefract) will be the focus for local development and services. In Local Service Centres priority will be to retain and improve services and facilities by allowing limited development to meet local needs. In rural areas the priority is to protect and enhance settlement and landscape diversity and character and to create vibrant communities by retaining and improving services, supporting economic diversification and meeting locally generated housing need by allowing very limited development.
- 3.6 The LDF Core Strategy settlement hierarchy and spatial development strategy will support and conform to the proposed regional strategy. LDF Development Policies also will support and conform to RSS.

The Community Strategy

- 3.7 The Wakefield District Community Strategy, *Fast Forward*, published by the Wakefield District Partnership in 2003, represents a shared commitment by key organisations to work together to achieve a long-term vision of Wakefield District, to secure the future well being of people who live and work in the area. The Council and its partners are using the framework of 'vision', 'key challenges', 'principles' and 'priorities' in *Fast Forward* to draw up plans for action throughout the District.

3 Planning and Compulsory Purchase Act 2004

- 3.8 The Community Strategy has been rolled forward and reviewed ⁽⁴⁾. The original vision and challenges have been largely retained but priority for the next three years is 'developing knowledge communities', i.e. building up levels of skills and confidence in individuals and communities. The Council entered into a Local Area Agreement in April 2006 which focuses on Families and Neighbourhoods and is the main delivery plan for the revised Community Strategy.
- 3.9 Aspects of the vision, particularly creating a dynamic local economy, achieving attractive environments, improving the quality of housing, improving accessibility and increasing the range of services available locally, have a spatial dimension (i.e. they take a different form in different parts of Wakefield District) which the LDF can help deliver. A number of priorities for action to meet the Community Strategy challenges are proposed. These are being co-ordinated by the Wakefield District Partnership through a Local Area Agreement, to ensure a framework is in place to secure funding and deliver the necessary action.
- 3.10 The LDF will be the means by which the spatial elements of the Community Strategy, especially those which relate to the use and development of land in different ways in different parts of the District, are expanded and implemented. The Community Strategy stresses the importance of the way its challenges are met. The principles included in the Community Strategy, relating to involving local people and making sure that actions promote social cohesion and sustainability, are equally relevant to the LDF.

Other Strategies

- 3.11 The LDF also takes account of the spatial implications of other plans, strategies and programmes at regional, sub-regional and local level (listed below). The LDF addresses the land-use consequences of other policies and programmes of the Council and stakeholders, and will not be restricted to matters which are implemented through the planning system. As the LDF takes account of these plans, strategies and programmes there should not be any adverse cumulative impact in combination with LDF policies on the integrity of the SAC.

Regional

- *Advancing Together* - The overarching regional strategy document
- Regional Sustainable Development Strategy (RSDF)
- Yorkshire & the Humber Regional Economic Strategy 2006-2015 (RES)
- Yorkshire & the Humber Regional Housing Strategy 2005-2021 (RHS)
- The Yorkshire and Humber Rural Framework 2006
- The Regional Freight Strategy (Freight and Logistics Intelligence for the Regional Transport Strategy) 2005
- Lets Take it from the Tip: Yorkshire & Humber Regional Waste Strategy 2003

Sub-Regional

- West Yorkshire Local Transport Plan 2006-2011
- West Yorkshire Investment Plan
- West Yorkshire Strategic Economic Assessment 2006
- Leeds City Region Development Programme 2006

Local

- Developing Knowledge Communities: The Wakefield District Community Strategy 2007
- Developing Knowledge Communities: The Wakefield District Community Strategy Review 2006
- Wakefield Council Corporate Plan
- Wakefield District Housing Strategy 2004-2008
- Regenerating the Wakefield District strategy Report 2003-2006

4 Developing Knowledge Communities: The Wakefield District Community Strategy, Wakefield District Partnership, March 2007

- Towards a New Regeneration Strategy for the Wakefield District 2007-2015
- Wakefield District Greenspace Strategy 2004-2009
- Wakefield District Tree and Woodland Strategy 2004-2009
- Wakefield District Sport and Recreation Strategy 2002-2005
- A Playing Pitch Plan for Wakefield District 2005-2015
- The Freedom to Be, Wakefield District Cultural Strategy 2003-2015
- We! The Draft Cultural Strategy for Wakefield District 2006
- Wakefield District Community Safety Strategy 2005-2008
- *Safe, Supported, Fulfilled: Wakefield Children and Young People's Plan 2006-2009*
- Wakefield Play Strategy
- Wakefield District Local Biodiversity Report
- Wakefield Cycling Strategy 2002
- Wakefield Parking Strategy 2006
- Wakefield District Rights of Way Improvement Plan
- Strategy for the Management of Municipal Waste in Wakefield
- Castleford Town Centre Strategy 2002-2012
- Getting Connected: Wakefield – A Strategic Framework for the District 2005
- Getting Connected: Wakefield – Developing the Vision 2005
- Five Towns Strategic Development Framework 2005
- The Green Corridor Strategic Framework and Spatial Plan 2005
- Wakefield and District Housing strategy and programmes
- Waste Public Finance Initiative (PFI)
- Street Lighting PFI
- Neighbourhood Action and Enforcement
- Parish Plans

Kirklees Metropolitan Council UDP

- 3.12 The 2km buffer zone around Denby Grange Ponds SAC extends across the District boundary into Kirklees District. The area which falls within the buffer zone is rural and designated as Green Belt. It includes a Conservation Area on part of the former Caphouse Colliery site which spans the District boundary and is now the National Mining Museum. There is also part of an Area of High Landscape Value, an archaeological site and a small area of the rural village of Flockton within the zone. Having examined these designations and supporting policies in the Kirklees UDP it is considered that none of them have would any significant impact on the integrity of the SAC nor would there be any adverse cumulative impact in combination with any of Wakefield's LDF policies.

4 Appropriate Assessment Tables

ASSESSING THE POTENTIAL IMPACT OF POLICIES AND PROPOSALS ON THE SAC

4.1 The following table summarises the reason for designating the SAC and the conservation objectives together with a list of recommendations on how harm can be avoided.

DENBY GRANGE COLLIERY PONDS SAC	
SAC Qualifying Features & conservation objectives	Great crested newt
Key environmental features that support site integrity	Ponds, Ancient woodland, Rough grassland, Terrestrial hibernation habitat
Recommendations on how to avoid harm and support integrity of the SAC	
Avoid proposals which could affect the water bodies e.g. impact on drainage and water quality	
Avoid proposals which could result in damage to habitat or cause disturbance e.g. pollution, inappropriate land use	

Table 1 Potential Impact on SAC

- 4.2 Planning policies and proposed uses of land/development that may potentially cause pollution, could have an impact on the water bodies (such as drainage or extraction), or may otherwise damage or disturb the site and its ecology should be avoided. Because of the site's location within the Green Belt and other protective designations within the LDF such as Ancient Woodland and Wildlife Habitat Network it is unlikely that there would be any significant direct threats from proposals for development. The impact of any policies or proposals affecting the use of land within two kilometres of the SAC will require assessment, as will District wide policies to ensure that there is no indirect impact. The main threats to the integrity of the SAC are likely to be from changes in management, agricultural or forestry practices within the site or in the surrounding 2km buffer zone. These operations do not often require planning consent and are not within the scope of the LDF.
- 4.3 The following sections and tables set out the potential impact of the LDF objectives, Core Strategy and Development Policies on the SAC. Options will be selected or rejected according to the following principles:
- Options that are likely to have a negative impact on the SAC should be rejected;
 - Where there is a potential negative impact options should be rejected unless the option in combination with other policies would avoid harm to the integrity of the the SAC;
 - Options that are likely to have a positive impact and would help to protect the integrity of the the SAC should be selected;
 - Options where no impact is identified should be selected.

Issues & Options

CORE STRATEGY OBJECTIVES

4.4 The following table sets out the potential impact of the LDF Core Strategy objectives on the SAC.

CORE STRATEGY OBJECTIVES	
Objective 1	Regenerating the local economy by encouraging investment and enterprise in the District and the development clusters of economic activity, whilst ensuring equal opportunities for small settlements.
Potential Negative Impact	Regeneration and new development will be focused within the larger settlements and service centres away from the SAC. Development in rural settlements such as Middlestown and Netherton would be limited. Potential impact of development on the SAC will be assessed when the Council considers allocations of sites in the Site Specific Proposals DPD and individual planning applications. This objective in combination with policies to protect the SAC should ensure potentially damaging development is not permitted. On balance it is considered that this objective will not significantly affect the integrity of the SAC.
Objective 2	Promoting and marketing a new image of the District.
No Impact Identified	The objective of improving the image of the District would not have any impact on the SAC.
Objective 3	The urban renaissance of Wakefield City.
No Impact Identified	The objective of regenerating Wakefield city centre would not have any impact on the SAC.
Objective 4	Reconnecting the coalfield communities in the South East.
No Impact Identified	The objective of making the communities in the South East of the District more accessible would not have any impact on the SAC.
Objective 5	The Five Towns Initiative.
No Impact Identified	The objective of regenerating the Five Towns would not have any impact on the SAC.
Objective 6	Meeting the housing needs of the District.
Potential Negative Impact	New housing will be focused within urban areas and existing settlements. Only very limited infill may be acceptable in small rural settlements such as Middlestown, Netherton, West Bretton and Midgley. Potential impact of development on the SAC will be assessed when the Council considers allocations of sites in the Site Specific Proposals DPD and individual planning applications. This objective in combination with policies to protect the SAC should ensure potentially damaging development is not permitted. On balance it is considered that this objective will not significantly affect the integrity of the SAC.
Objective 7	Providing affordable housing for those in need.
Potential Negative Impact	New housing will be focused within urban areas and existing settlements. Only very limited development to meet local needs may be acceptable in small rural settlements such as Middlestown, Netherton, West Bretton and Midgley. Potential impact of development on the SAC will be assessed when the Council considers allocations of sites in the Site Specific Proposals DPD and individual planning applications. This objective in combination with policies to protect the SAC should ensure potentially damaging development is not permitted. On balance it is considered that this objective will not significantly affect the integrity of the SAC.
Objective 8	Making it easier to get around the District and access local services and amenities by increasing transport choice and improving public transport accessibility.

CORE STRATEGY OBJECTIVES	
Positive Impact	This objective will help to tackle climate change and will therefore have a positive affect by helping to protect the integrity of the SAC. There are no proposals for new or enhanced transport infrastructure in this part of the District.
Objective 9	Reducing the need to travel by car.
Positive Impact	This objective will help to tackle climate change and will therefore have a positive affect by helping to protect the integrity of the SAC.
Objective 10	Create an environment that promotes and maintains a good 'Quality of Life'.
No Impact Identified	The objective to maintain the quality of life for citizens would not have any impact on the SAC.
Objective 11	Protecting and enhancing bio-diversity.
Positive Impact	This is a positive objective which will help to ensure that the integrity of the SAC is protected.
Objective 12	Improving the range and quality of cultural, tourism and leisure opportunities across the District.
Potential Negative Impact	Cultural and leisure will be focused within urban areas and existing settlements. Only very limited development may be acceptable in small rural settlements such as Middlestown, Netherton, West Bretton and Midgley. Potential impact of development on the SAC will be assessed when the Council considers allocations of sites in the Site Specific Proposals DPD and individual planning applications. This objective in combination with policies to protect the SAC should ensure potentially damaging development is not permitted. On balance it is considered that this objective will not significantly affect the integrity of the SAC.
Objective 13	Promoting high quality design in new developments.
No Impact Identified	The objective to improve the quality of design would not have any impact on the SAC.
Objective 14	Protecting and, where appropriate, enhancing the historic environment.
No Impact Identified	This objective of protecting and enhancing historic assets would not have any impact on the SAC.

Table 2 Core Strategy Objectives

CORE STRATEGY POLICY OPTIONS

4.5 The following table sets out the potential impact of the Core Strategy Options on the SAC.

CORE STRATEGY POLICY OPTIONS	
Option SD1: Concentrate new development and regeneration in urban areas identified in the Community Strategy as priorities for regeneration, particularly town and city centres, and meeting local needs in other settlements	
Potential Negative Impact	Regeneration and new development will be focused within the larger settlements and service centres away from the SAC. Limited development to meet local needs may be acceptable in small rural settlements such as Middlestown and Netherton. Potential impact of development on the SAC will be assessed when the Council considers allocations of sites in the Site Specific Proposals DPD and individual planning applications. This option in combination with policies to protect the SAC should ensure potentially damaging development is not permitted. On balance it is considered that this objective will not significantly affect the integrity of the SAC.
Option SD2: Support regeneration throughout the District giving priority to areas which are most deprived	
No Impact Identified	The SAC is in a rural location within the western part of the District and is not in an area in need of regeneration. This option would not have any on the SAC.
Option SD3: Allow further development on Greenfield land on the edge of settlements, particularly in the vicinity of motorway junctions or reflecting market demand	
Negative Impact Likely	In the rural villages of Middlestown, Netherton or West Bretton there is likely to be a high level of demand above local needs which could have an adverse impact on the SAC.
Option H1: Do not change the strategy/policy for distributing new housing from the existing UDP (do nothing scenario)	
Negative Impact Likely	This option does not take updated policies and guidance into account and could have an adverse impact on the SAC.
Option H2: When assessing the scale of new housing required, aim to meet the full market demand for housing	
Negative Impact Likely	In the rural villages of Middlestown, Netherton or West Bretton there is likely to be a high level of demand above local needs which could have an adverse impact on the SAC.
Option H3: When assessing the scale of new housing required, do not aim to meet the full market demand for housing	
Potential Negative Impact	In the rural villages of Middlestown, Netherton or West Bretton there is likely to be a high level of demand above local needs and this option could help reduce potential damage to the SAC. Potential impact of development on the SAC will be assessed when the Council considers allocations of sites in the Site Specific Proposals DPD and individual planning applications. This option in combination with policies to protect the SAC should ensure potentially damaging development is not permitted. On balance it is considered that this objective will not significantly affect the integrity of the SAC.
Option H4: Seek to accommodate a higher level of house building than in the recent past to encourage rebuilding of communities	
Negative Impact Likely	In the rural villages of Middlestown, Netherton or West Bretton there is likely to be a high level of demand above local needs which could have an adverse impact on the SAC.
Option H5: New housing development in Wakefield District to be concentrated in the principal urban areas, Wakefield, Castleford and Pontefract, with smaller amounts in the following urban areas - Normanton, Knottingley and Featherstone. In the South East, new housing to be focused within the urban areas of Hemsworth and South Elmsall/South Kirkby	

CORE STRATEGY POLICY OPTIONS	
No Impact Identified	This option focuses development in main settlements away from the SAC and will not have any impact on the SAC.
Option H6: Only allow housing in other urban areas (i.e. Ossett, Horbury and Stanley/Outwood) which is within the area's capacity to accommodate new development without compromising the regeneration strategy for the District	
No Impact Identified	This option focuses development in urban areas away from the SAC and will not have any significant impact on the SAC.
Option H7: In all other villages and smaller settlements new development should be to meet local needs or to maintain the viability of existing services	
Potential Negative Impact	Even limited development in Middlestown, Netherton, West Bretton and Midgley could have an adverse impact on the SAC. Potential impact of development on the SAC will be assessed when the Council considers allocations of sites in the Site Specific Proposals DPD and individual planning applications. This option in combination with policies to protect the SAC should ensure potentially damaging development is not permitted. On balance it is considered that this objective will not significantly affect the integrity of the SAC.
Option H8: Spread new housing allocations around the District so that land is allocated in each settlement in proportion to its current size	
Negative Impact Likely	In the rural villages of Middlestown, Netherton or West Bretton there is likely to be a high level of demand above local needs which could have an adverse impact on the SAC.
Option H9: Concentrate new housing where demand is strongest, based on the number of houses built in the recent past	
Negative Impact Likely	In the rural villages of Middlestown, Netherton or West Bretton there is likely to be a high level of demand above local needs which could have an adverse impact on the SAC.
Option H10: Base the scale and distribution of new housing on the scale of identified urban potential in each urban area	
Potential Negative Impact	This option is likely to concentrate development in larger settlements away from the SAC, however even limited development in Middlestown and Netherton could have an adverse impact on the SAC. Potential impact of development on the SAC will be assessed when the Council considers allocations of sites in the Site Specific Proposals DPD and individual planning applications. This option in combination with policies to protect the SAC should ensure potentially damaging development is not permitted. On balance it is considered that this objective will not significantly affect the integrity of the SAC.
Option H11: Relate the scale and distribution of new housing to the number of jobs likely to be created in the future, to balance housing and employment opportunities	
Potential Negative Impact	This option is likely to concentrate development in larger settlements away from the SAC, however even limited development in Middlestown and Netherton could have an adverse impact on the SAC. Potential impact of development on the SAC will be assessed when the Council considers allocations of sites in the Site Specific Proposals DPD and individual planning applications. This option in combination with policies to protect the SAC should ensure potentially damaging development is not permitted. On balance it is considered that this objective will not significantly affect the integrity of the SAC.
Option H12: Identify new housing sites sequentially - firstly sites within urban areas, then sites which extend established urban areas and finally sites within transport corridors - giving priority to use of Brownfield land before Greenfield land in each location	
Positive Impact	This option is likely to concentrate development in larger settlements away from rural villages such as Middlestown, Netherton or West Bretton and therefore will help to protect the integrity of the SAC.
Option H13: Prevent new housing taking place on any Greenfield windfall sites	

CORE STRATEGY POLICY OPTIONS	
Positive Impact	This option will help prevent development which may affect the integrity of the SAC.
Option H14: Limit the size of permissible Greenfield windfall 'infill' sites	
Potential Negative Impact	Even limited infill development in Middlestown, Netherton or West Bretton could have an adverse impact on the SAC. Potential impact of development on the SAC will be assessed when the Council considers allocations of sites in the Site Specific Proposals DPD and individual planning applications. This option in combination with policies to protect the SAC should ensure potentially damaging development is not permitted. On balance it is considered that this objective will not significantly affect the integrity of the SAC.
Option H15: Leave the current Brownfield target at 61%	
No Impact Identified	This target to develop brownfield land would not have any impact on the SAC.
Option H16: Increase the Brownfield target above 61%	
No Impact Identified	This target to develop brownfield land would not have any impact on the SAC.
Option H17: Leave the current minimum density at 30 dwellings per hectare	
No Impact Identified	This option would not have any impact on the SAC.
Option H18: Increase the minimum density to 35 dwellings per hectare	
No Impact Identified	This option would not have any impact on the SAC.
Option H19: Maintain the minimum amount of affordable housing at 25%	
No Impact Identified	This option would not have any impact on the SAC.
Option H20: Increase the minimum amount of affordable housing to 40%	
No Impact Identified	This option would not have any impact on the SAC.
Option H21: Increase the minimum amount of affordable housing to 50%	
No Impact Identified	This option would not have any impact on the SAC.
Option EC1: Do not change the strategy/policy for locating employment land from the existing UDP (do nothing scenario)	
Negative Impact Likely	This option does not take updated policies and guidance into account and could have an adverse impact on the SAC.
Option EC2: Do not allocate more land for employment use	
No Impact Identified	This option would not have any significant impact on the SAC.
Option EC3: Assess the future need for employment land on the basis of past take-up rates	
Potential Negative Impact	This option is likely to concentrate development in larger settlements, however any development in Middlestown or Netherton could have an adverse impact on the SAC. Potential impact of development on the SAC will be assessed when the Council considers allocations of sites in the Site Specific Proposals DPD and individual planning applications. This option in combination with policies to protect the SAC should ensure potentially damaging development is not permitted. On balance it is considered that this objective will not significantly affect the integrity of the SAC.

CORE STRATEGY POLICY OPTIONS

Option EC4: Assess the future need for employment land on the basis of an estimate of the number of jobs which need to be provided and assumptions about the number of jobs which can be provided per hectare

Potential Negative Impact	This option is likely to concentrate development in larger settlements, however any development in Middlestown or Netherton could have an adverse impact on the SAC. Potential impact of development on the SAC will be assessed when the Council considers allocations of sites in the Site Specific Proposals DPD and individual planning applications. This option in combination with policies to protect the SAC should ensure potentially damaging development is not permitted. On balance it is considered that this objective will not significantly affect the integrity of the SAC.
---------------------------	--

Option EC5: Assess the future need for employment land on the basis of the Wakefield District Partnership's objectives for economic regeneration - to attract inward investment and assist local businesses to grow

Potential Negative Impact	Development will be focused within the larger settlements and service centres away from the SAC and would be limited in rural areas in the western part of the District. However even limited development could have an adverse impact on the SAC. Potential impact of development on the SAC will be assessed when the Council considers allocations of sites in the Site Specific Proposals DPD and individual planning applications. This option in combination with policies to protect the SAC should ensure potentially damaging development is not permitted. On balance it is considered that this objective will not significantly affect the integrity of the SAC.
---------------------------	--

Option EC6: Adopt a sequential approach to identifying employment sites - use Brownfield land within urban centres first, where land outside urban areas is required give preference to land on the urban periphery well served by public transport, followed if necessary by sites at nodes within public transport corridors. Reuse of previously developed land will be favoured in each location

Potential Negative Impact	Development will be focused within the larger settlements and service centres away from the SAC. Potential impact of development on the SAC will be assessed when the Council considers allocations of sites in the Site Specific Proposals DPD and individual planning applications. This option in combination with policies to protect the SAC should ensure potentially damaging development is not permitted. On balance it is considered that this objective will not significantly affect the integrity of the SAC.
---------------------------	--

Option EC7: Employment sites to be in locations close to where people live and with good access to public transport

Potential Negative Impact	Development will be focused within the larger settlements and service centres away from the SAC. Development in rural areas in the western part of the District would be limited. Potential impact of development on the SAC will be assessed when the Council considers allocations of sites in the Site Specific Proposals DPD and individual planning applications. This option in combination with policies to protect the SAC should ensure potentially damaging development is not permitted. On balance it is considered that this objective will not significantly affect the integrity of the SAC.
---------------------------	---

Option EC8: Employment sites to be attractive to businesses, investors and the market

Potential Negative Impact	This option is likely to concentrate development around motorway junctions and the larger settlements, however any employment development in Middlestown, Netherton or West Bretton area could potentially have an adverse impact on the SAC. Potential impact of development on the SAC will be assessed when the Council considers allocations of sites in the Site Specific Proposals DPD and individual planning applications. This option in combination with policies to protect the SAC should ensure potentially damaging development is not permitted. On balance it is considered that this objective will not significantly affect the integrity of the SAC.
---------------------------	---

Option EC9: Employment sites to be located to take advantage of improvements in transport infrastructure (either by road building or improvements to cycling/walking/public transport)

CORE STRATEGY POLICY OPTIONS	
Potential Negative Impact	Development is likely to be focused within the larger settlements and service centres away from the SAC. Development in rural areas in the western part of the District would be limited. Potential impact of development on the SAC will be assessed when the Council considers allocations of sites in the Site Specific Proposals DPD and individual planning applications. This option in combination with policies to protect the SAC should ensure potentially damaging development is not permitted. On balance it is considered that this objective will not significantly affect the integrity of the SAC.
Option EC10: Release Green Belt land for employment purposes only in exceptional circumstances to encourage regeneration	
Potential Negative Impact	Even limited development in the Green Belt could have an adverse impact on the SAC. Potential impact of development on the SAC will be assessed when the Council considers allocations of sites in the Site Specific Proposals DPD and individual planning applications. This option in combination with policies to protect the SAC should ensure potentially damaging development is not permitted. On balance it is considered that this objective will not significantly affect the integrity of the SAC.
Option EC11: Allocate significant additional Greenfield employment sites on the edge of settlements, particularly in the vicinity of motorway junctions for production industries, B1 office uses, business clusters, and warehousing & distribution	
Negative Impact Likely	Large scale development of this type could have a significant adverse impact on the SAC.
Option EC12: Employment allocations to be spread around the District so that land is available in every large settlement	
Potential Negative Impact	Development is likely to be focused within the larger settlements and service centres away from the SAC however even limited development around Middlestown or Netherton could have an adverse impact on the SAC. Potential impact of development on the SAC will be assessed when the Council considers allocations of sites in the Site Specific Proposals DPD and individual planning applications. This option in combination with policies to protect the SAC should ensure potentially damaging development is not permitted. On balance it is considered that this objective will not significantly affect the integrity of the SAC.
Option EC13: Maintain existing Employment Zones with a strengthened policy to retain employment uses and protect existing occupiers	
No Impact Identified	Employment Zones are within urban areas away from the SAC and this option would not have any impact on the SAC.
Option EC14: Designate some Employment Zones as 'Mixed Use Zones' for housing and employment	
No Impact Identified	Employment Zones are within urban areas away from the SAC and this option would not have any impact on the SAC.
Option MU1: Do not change the strategy/policy from existing UDP (do nothing scenario)	
Negative Impact Likely	This option does not take updated policies and guidance into account and could have an adverse impact on the SAC.
Option MU2: Include a policy encouraging mixed use development generally in Wakefield City Centre and town centres	
No Impact Identified	This option concerns development in the urban areas away from the SAC and would not have any impact on the SAC.
Option T1: Do not change the strategy/policy from existing UDP (do nothing scenario)	
Negative Impact Likely	This option does not take updated policies and guidance into account and could have an adverse impact on the SAC.

CORE STRATEGY POLICY OPTIONS	
Option T2: Use the accessibility criteria proposed in RPG which set minimum standards for the provision of public transport services in new development	
Positive Impact	This option will help to tackle climate change and will therefore have a positive affect by helping to protect the integrity of the SAC.
Option T3: Include a policy requiring contributions from developers towards transport improvements to deliver transport solutions which reduce the dependence on private car use	
Positive Impact	This option will help to tackle climate change and will therefore have a positive affect by helping to protect the integrity of the SAC.
Option T4: Maintain maximum car parking standards which are set out in supplementary planning guidance (District Wide Parking Standards SPG7)	
No Impact Identified	This option would not have any impact on the SAC.
Option T5: Amend maximum car parking standards to make them more stringent than current levels	
No Impact Identified	This option would not have any impact on the SAC.
Option T6: Identify sites for long stay commuter park and ride sites along public transport corridors	
Positive Impact	This option will help to tackle climate change and will therefore have a positive affect by helping to protect the integrity of the SAC.
Option GB1: Maintain the permanence of the Green Belt in its present location and change only in exceptional circumstances to facilitate regeneration	
Potential Negative Impact	Even limited development in the Green Belt could have an adverse impact on the SAC. Potential impact of development on the SAC will be assessed when the Council considers allocations of sites in the Site Specific Proposals DPD and individual planning applications. This option in combination with policies to protect the SAC should ensure potentially damaging development is not permitted. On balance it is considered that this objective will not significantly affect the integrity of the SAC.
Option GB2: Delete Protected Areas of Search (PAS) designations from the proposals maps and add sites that border the Green Belt to the Green Belt	
No Impact Identified	There are no PAS sites within the vicinity of the SAC and this option would not have any impact on the SAC.
Option GB3: Delete PAS designations from the proposals maps and leave land unallocated	
No Impact Identified	There are no PAS sites within the vicinity of the SAC and this option would not have any impact on the SAC.

Table 3 Core Strategy Policy Options

DEVELOPMENT POLICY OPTIONS

4.6 The following table set out the potential impact of the Development Policy Options on the SAC.

DEVELOPMENT POLICY OPTIONS	
Option DC1: Do not change the strategy/policy from existing UDP (do nothing scenario)	
Negative Impact Likely	This option does not take updated policies and guidance into account and could have an adverse impact on the SAC.
Option DC2: Use existing criteria based approach to the consideration of proposals for mineral working (UDP) (do nothing scenario)	
Negative Impact Likely	This option does not take updated policies and guidance into account and could have an adverse impact on the SAC.
Option DC3: Use existing criteria based approach to the consideration of proposals for waste management and treatment facilities (UDP) (do nothing scenario)	
Negative Impact Likely	This option does not take updated policies and guidance into account and could have an adverse impact on the SAC.
Option DC4: Identify specific locations for waste management and treatment facilities in proximity to arisings	
Potential Negative Impact	Potential impact of development on the SAC will be assessed when the Council considers allocations of sites in the Site Specific Proposals DPD and individual planning applications. This option in combination with policies to protect the SAC should ensure potentially damaging development is not permitted. On balance it is considered that this objective will not significantly affect the integrity of the SAC.
Option DC5: Identify specific opportunities for energy from waste facilities	
Positive Impact	This option will help to tackle climate change and will therefore have a positive affect by helping to protect the integrity of the SAC.
Option DC6: Encourage maximum use of renewable energy resources (e.g. community heating projects, combined heat and power systems) in all new development with significant energy demands	
Positive Impact	This option will help to tackle climate change and will therefore have a positive affect by helping to protect the integrity of the SAC.
Option DC7: Develop policies to require a percentage of the energy used in new residential, commercial or industrial developments to come from on-site renewable resources	
Positive Impact	This option will help to tackle climate change and will therefore have a positive affect by helping to protect the integrity of the SAC.
Option DC8: Use existing UDP policies to control development in the Green Belt (do nothing scenario)	
Potential Negative Impact	Even limited development in the Green Belt could have an adverse impact on the SAC. Potential impact of development on the SAC will be assessed when the Council considers allocations of sites in the Site Specific Proposals DPD and individual planning applications. This option in combination with policies to protect the SAC should ensure potentially damaging development is not permitted. On balance it is considered that this objective will not significantly affect the integrity of the SAC.
Option DC9: Include policy to enable proposed extensions and free standing buildings within the curtilage of an existing industrial or business concern in the Green Belt to be considered on merit, subject to the impact on openness and visual amenities	
Potential Negative Impact	Even limited development in the Green Belt could have an adverse impact on the SAC. Potential impact of development on the SAC will be assessed when the Council considers allocations of sites in the Site Specific Proposals DPD and individual planning applications. This option in combination with policies to protect the SAC should ensure potentially

DEVELOPMENT POLICY OPTIONS	
	damaging development is not permitted. On balance it is considered that this objective will not significantly affect the integrity of the SAC.
Option DC10: Development which meets local needs will be allowed in rural locations, but should be located in local service centres.	
Potential Negative Impact	Development in Middlestown and Netherton would be limited, however even limited development may have some impact. Potential impact of development on the SAC will be assessed when the Council considers allocations of sites in the Site Specific Proposals DPD and individual planning applications. This option in combination with policies to protect the SAC should ensure potentially damaging development is not permitted. On balance it is considered that this objective will not significantly affect the integrity of the SAC.
Option DC11: Protect existing facilities in villages (shops, post offices, pubs) from conversion to residential use	
No Impact Identified	This option would not have any impact on the SAC.
Option DC12: Support farm diversification proposals which maintain or develop the rural economy and do not conflict with Green Belt Proposals	
Potential Negative Impact	Development would be limited but may have some impact. Potential impact of development on the SAC will be assessed when the Council considers allocations of sites in the Site Specific Proposals DPD and individual planning applications. This option in combination with policies to protect the SAC should ensure potentially damaging development is not permitted. On balance it is considered that this objective will not significantly affect the integrity of the SAC.
Option DC13: Favour the conversion of existing buildings in rural areas for employment uses	
Potential Negative Impact	Development would be limited but may have some impact. Potential impact of development on the SAC will be assessed when the Council considers allocations of sites in the Site Specific Proposals DPD and individual planning applications. This option in combination with policies to protect the SAC should ensure potentially damaging development is not permitted. On balance it is considered that this objective will not significantly affect the integrity of the SAC.
Option DC14: Resist, or place a limit on, the number of dwellings permitted in isolated residential conversion schemes	
Potential Negative Impact	Development would be limited but may have some impact. Potential impact of development on the SAC will be assessed when the Council considers allocations of sites in the Site Specific Proposals DPD and individual planning applications. This option in combination with policies to protect the SAC should ensure potentially damaging development is not permitted. On balance it is considered that this objective will not significantly affect the integrity of the SAC.
Option DC15: Include new policy requiring developers to contribute to the cost of education provision	
No Impact Identified	This option would not have any impact on the SAC.
Option DC16: Incorporate guidance in Supplementary Planning Guidance into policy to improve control over advertisements and shop front design affecting Conservation Areas and Listed Buildings	
No Impact Identified	This option would not have any impact on the SAC.
Option DC17: Replace UDP policies relating to the Wakefield Design Priority Area (DPA) with stronger policies which would apply across the District	
No Impact Identified	This option would not have any impact on the SAC.

DEVELOPMENT POLICY OPTIONS	
Option DC18: New policy on safe/secure design and reducing crime, to improve community safety and reduce opportunities for crime	
No Impact Identified	This option would not have any impact on the SAC.
Option DC19: Adopt a precautionary approach to telecommunications development which encourages the sharing of existing masts and tall buildings/structures	
No Impact Identified	This option would not have any impact on the SAC.
Option DC20: New policy to protect and enhance 'Wakefield Nature Areas'	
Positive Impact	This is a positive option which will help to protect the integrity of the SAC.
Option DC21: New policy to protect and enhance Ancient Woodland	
Positive Impact	This is a positive option which will help to protect the integrity of the SAC.
Option DC22: Identify 'Wildlife corridors' throughout the District and include policies to protect habitats	
Positive Impact	This is a positive option which will help to protect the integrity of the SAC.
Option DC23: New policies to protect the character of the countryside and other open landscapes throughout the District	
Positive Impact	This is a positive option which will help to protect the integrity of the SAC.
Option DC24: Identify other sites for protection as "large tracts of land within settlements" (Wrenthorpe Valley is the only one at present)	
No Impact Identified	This option would not have any impact on the SAC.
Option DC25: New policy to improve the quality of landscape design in new development	
No Impact Identified	This option would not have any impact on the SAC.
Option DC26: New policy to glare and spillage from floodlights to reduce the impact on residential amenity and nature conservation	
Positive Impact	This is a positive option which will help to protect the integrity of the SAC.
Option DC27: New policy to ensure that new development throughout the District does not result in unacceptable levels of air pollution	
Positive Impact	This is a positive option which will help to protect the integrity of the SAC.
Option DC28: New policy to ensure that new development in Air Quality Management Areas does not lead to a significant increase in pollution levels	
Positive Impact	This is a positive option which will help to protect the integrity of the SAC.
Option DC29: New policy to encourage sustainable construction and energy conservation	
Positive Impact	This option will help to tackle climate change and will therefore have a positive affect by helping to protect the integrity of the SAC.

Table 4 Development Policy Options

Preferred Options - Core Strategy Policies

CORE STRATEGY SPATIAL OBJECTIVES

4.7 The following table sets out the potential impact of the Core Strategy Preferred Options Spatial Objectives on the SAC.

CORE STRATEGY SPATIAL OBJECTIVES	
Objective 1	To ensure that all new development, activities and uses of land adhere to and promote the principles of sustainable development and enhance the quality of life for District residents.
Positive Impact	This is a positive objective promoting sustainable development which will help to protect the integrity of the SAC.
Objective 2	To meet the needs of the District by building on its strengths and the opportunities provided through good links with the wider Leeds City Region, enabling it to play a prominent role in the creation of sustainable communities, in line with the strategy and policy framework provided by the Regional Spatial Strategy for Yorkshire & the Humber.
Potential Negative Impact	Development will be focused in the larger settlements and service centres away from the SAC. This objective in combination with policies to protect the SAC should ensure potentially damaging development is not permitted. On balance it is considered that this objective will not significantly affect the integrity of the SAC.
Objective 3	To locate development where it will provide the opportunity for people to satisfy their day-to-day needs for employment, shopping, education, leisure, health and other services locally or in places which minimise the need to travel and are accessible safely and conveniently by non-car modes of travel – walking, cycling, public transport. This will be achieved by: <ul style="list-style-type: none"> a. concentrating most new development within urban areas, with major developments located in the largest settlements; b. focusing development activity in Wakefield city, and other town centres, taking advantage of existing services and high levels of accessibility; c. allowing small scale development in local service centres, villages and rural areas which meets identified local needs or maintains the viability of local services.
Potential Negative Impact	New development will be focused within urban areas and existing settlements away from the SAC. Only very limited development may be acceptable in small rural settlements such as Middlestown, Netherton, West Bretton and Midgley. Potential impact of development on the SAC will be assessed when the Council considers allocation of sites in the Site Specific Proposals DPD and individual planning applications. This objective in combination with policies to protect the SAC should ensure potentially damaging development is not permitted. On balance it is considered that this objective will not significantly affect the integrity of the SAC.
Objective 4	To make it easier to travel around the District and the wider Leeds City Region and to access local services and amenities using sustainable transport modes (walking, cycling, public transport), by increasing transport choice and improving public transport accessibility.
Positive Impact	This objective will help to tackle climate change and will therefore have a positive affect by helping to protect the integrity of the SAC.
Objective 5	To provide sufficient good quality housing of the appropriate size, types, tenures and affordability to meet the identified needs of the District, in line with the housing requirement of RSS, by promoting efficient use and improvement of the existing housing stock and providing new housing in sustainable locations.

CORE STRATEGY SPATIAL OBJECTIVES	
Potential Negative Impact	New housing will be focused within urban areas and existing settlements away from the SAC. Only very limited development may be acceptable in small rural settlements such as Middlestown, Netherton, West Bretton and Midgley. Potential impact of development on the SAC will be assessed when the Council considers allocation of sites in the Site Specific Proposals DPD and individual planning applications. This objective in combination with policies to protect the SAC should ensure potentially damaging development is not permitted. On balance it is considered that this objective will not significantly affect the integrity of the SAC.
Objective 6	To create attractive, successful and accessible city and town centres by encouraging development which provides a range of services and activities which are appropriate to the function and size of the centre.
Potential Negative Impact	New development will be focused within urban areas and existing settlements away from the SAC. Potential impact of development on the SAC will be assessed when the Council considers allocation of sites in the Site Specific Proposals DPD and individual planning applications. This objective in combination with policies to protect the SAC should ensure potentially damaging development is not permitted. On balance it is considered that this objective will not significantly affect the integrity of the SAC.
Objective 7	To support the growth of a dynamic local economy which increases prosperity for all sections of the community by: <ul style="list-style-type: none"> a. encouraging investment and enterprise in the District and the development of clusters of economic activity; b. building on the competitive advantages enjoyed by the District; c. the urban renaissance of Wakefield City; d. reconnecting the Coalfield Communities in the South East; e. the urban renaissance of the Five Towns; f. encouraging the diversification of the rural economy.
Potential Negative Impact	Employment development will be focused within urban areas and existing settlements away from the SAC. Only very limited development may be acceptable in small rural settlements such as Middlestown and Netherton. Potential impact of development on the SAC will be assessed when the Council considers allocation of sites in the Site Specific Proposals DPD and individual planning applications. This objective in combination with policies to protect the SAC should ensure potentially damaging development is not permitted. On balance it is considered that this objective will not significantly affect the integrity of the SAC.
Objective 8	To provide a range of high quality, accessible cultural, recreational and leisure opportunities across the district to improve the quality of life for residents and visitors.
Potential Negative Impact	Some leisure activities may have an impact on the SAC and proposals will need to be assessed when the Council considers allocation of sites in the Site Specific Proposals DPD and individual planning applications. The objective in combination with policies to protect the SAC should ensure potentially damaging development is not permitted. On balance it is considered that this objective will not significantly affect the integrity of the SAC.
Objective 9	To protect and enhance the historic heritage, character and identity of the individual settlements of the District by: <ul style="list-style-type: none"> a. ensuring that the scale and location of development in each settlement is in keeping with its size, form and character;

CORE STRATEGY SPATIAL OBJECTIVES	
	<ul style="list-style-type: none"> b. ensuring that the buildings and open spaces which create character are protected, maintained and enhanced; c. ensuring high quality, sustainable, design in all new development; d. retaining the Green Belt to make a clear distinction between town and country.
No Impact Identified	This objective encourages sustainable development by conservation and enhancement of the historic and built environment and would not have any significant impact on the SAC.
Objective 10	To ensure that the District's natural environment, including wildlife habitats and landscape character, is conserved and protected and that new development identifies, protects and enhances important assets.
Positive Impact	This objective will ensure that environmental quality and integrity of all sites of ecological importance, including the SAC, are protected.
Objective 11	To promote and maintain a clean, attractive and safe environment by reducing waste, avoiding pollution, ensuring efficient use of resources and promoting high quality design in all new development.
Positive Impact	This is a positive objective to preserve and enhance the quality of the environment and will help protect the integrity of the SAC.

Table 5 Core Strategy Preferred Options Spatial Objectives

CORE STRATEGY POLICIES PREFERRED OPTIONS

4.8 The following table sets out the potential impact of the LDF Core Strategy Preferred Options Policies on the SAC

CORE STRATEGY POLICY PREFERRED OPTIONS	
Policy CS1: Principles Determining the Location of Development	
Potential Negative Impact	New development will be focused within urban areas and existing settlements away from the SAC. Only very limited development may be acceptable in small rural settlements such as Middlestown, Netherton, West Bretton and Midgley. Potential impact of development on the SAC will be assessed when the Council considers allocation of sites in the Site Specific Proposals DPD and individual planning applications. This policy in combination with other policies to protect the SAC should ensure potentially damaging development is not permitted. On balance it is considered that this policy will not significantly affect the integrity of the SAC.
Policy CS2: Sustainable Development	
Positive Impact	This is a positive policy to ensure that development is sustainable and includes conservation of ecological assets which will help to protect the integrity of the SAC.
Policy CS3: Development Criteria	
Positive Impact	This is a positive policy to ensure development is sustainable and will help prevent harm to the integrity of the SAC.
Policy CS4: High Quality Design	
No Impact Identified	This policy encourages sustainable development through good design and protection of environmental quality and would not have any significant impact on the SAC.
Policy CS5: The Scale of Additional Housing	
Potential Negative Impact	New housing will be focused within urban areas and existing settlements away from the SAC. Only very limited development may be acceptable in small rural settlements such as Middlestown, Netherton, West Bretton and Midgley. Potential impact of development on the SAC will be assessed when the Council considers allocation of sites in the Site Specific Proposals DPD and individual planning applications. This policy in combination with other policies to protect the SAC should ensure potentially damaging development is not permitted. On balance it is considered that this policy will not significantly affect the integrity of the SAC.
Policy CS6: The Distribution and Location of Housing	
Potential Negative Impact	New housing will be focused within urban areas and existing settlements away from the SAC. Only very limited development may be acceptable in small rural settlements such as Middlestown, Netherton, West Bretton and Midgley. Potential impact of development on the SAC will be assessed when the Council considers allocation of sites in the Site Specific Proposals DPD and individual planning applications. This policy in combination with other policies to protect the SAC should ensure potentially damaging development is not permitted. On balance it is considered that this policy will not significantly affect the integrity of the SAC.
Policy CS7: Housing Allocations	
Potential Negative Impact	New housing will be focused within urban areas and existing settlements away from the SAC. Only very limited development may be acceptable in small rural settlements such as Middlestown, Netherton, West Bretton and Midgley. Potential impact of development on the SAC will be assessed when the Council considers allocation of sites in the Site Specific Proposals DPD and individual planning applications. This policy in combination with other policies to protect the SAC should ensure potentially damaging development is not permitted.

CORE STRATEGY POLICY PREFERRED OPTIONS	
	On balance it is considered that this policy will not significantly affect the integrity of the SAC.
Policy CS8: Phasing of Housing Development	
No Impact Identified	This policy sets out the timescale for house building in the District and would not have any impact on the SAC.
Policy CS9: Greenfield Windfall Housing Sites	
Potential Negative Impact	Only very limited development may be acceptable in small rural settlements such as Middlestown, Netherton, West Bretton and Midgley. Potential impact of development on the SAC will be assessed when the Council considers allocation of sites in the Site Specific Proposals DPD and individual planning applications. This policy in combination with other policies to protect the SAC should ensure potentially damaging development is not permitted. On balance it is considered that this policy will not significantly affect the integrity of the SAC.
Policy CS10: Brownfield Windfall Housing Sites	
No Impact Identified	This policy sets out principles for considering housing development on brownfield land and would not have any impact on the SAC.
Policy CS11: Housing Mix	
No Impact Identified	This policy encourages sustainable development by ensuring housing meets local needs and would not have any impact on the SAC.
Policy CS12: Affordable Housing	
No Impact Identified	This policy encourages sustainable development by ensuring affordable housing is provided and would not have any impact on the SAC.
Policy CS13: Affordable Housing on Exception Sites	
No Impact Identified	This policy encourages sustainable development by ensuring housing meets local needs and would not have any impact on the SAC.
Policy CS14: Existing Housing	
No Impact Identified	This policy encourages sustainable development by ensuring housing quality is improved and would not have any impact on the SAC.
Policy CS15: Scale of Employment Land	
Potential Negative Impact	Employment will be focused within urban areas and existing settlements away from the SAC. Only very limited development may be acceptable in small rural settlements such as Middlestown and Netherton. Potential impact of development on the SAC will be assessed when the Council considers allocation of sites in the Site Specific Proposals DPD and individual planning applications. This Policy in combination with other policies to protect the SAC should ensure potentially damaging development is not permitted. On balance it is considered that this policy will not significantly affect the integrity of the SAC.
Policy CS16: Location of Employment Development	
Potential Negative Impact	Employment will be focused within urban areas and existing settlements away from the SAC. Only very limited development may be acceptable in small rural settlements such as Middlestown and Netherton. Potential impact of development on the SAC will be assessed when the Council considers allocation of sites in the Site Specific Proposals DPD and individual planning applications. This Policy in combination with other policies to protect the SAC should ensure potentially damaging development is not permitted. On balance it is considered that this policy will not significantly affect the integrity of the SAC.
Policy CS17: The Rural Economy	

CORE STRATEGY POLICY PREFERRED OPTIONS	
Potential Negative Impact	Development may be acceptable in small rural settlements such as Middlestown, Netherton, West Bretton and Midgley. Potential impact of development on the SAC will be assessed when the Council considers allocation of sites in the Site Specific Proposals DPD and individual planning applications. This Policy in combination with other policies to protect the SAC should ensure potentially damaging development is not permitted. On balance it is considered that this policy will not significantly affect the integrity of the SAC.
Policy CS18: Protection of Existing Employment Sites in Rural Areas	
No Impact Identified	This policy encourages sustainability by protecting existing employment uses in rural areas and would not have any significant impact on the SAC.
Policy CS19: Employment Zones	
No Impact Identified	This policy relates to Employment Zones which are in urban areas away from the SAC and would not have any impact on the SAC.
Policy CS20: Supporting the Local Economy	
Potential Negative Impact	Employment will be focused within urban areas and existing settlements away from the SAC. Only very limited development may be acceptable in small rural settlements such as Middlestown and Netherton. Potential impact of development on the SAC will be assessed when the Council considers allocation of sites in the Site Specific Proposals DPD and individual planning applications. This Policy in combination with other policies to protect the SAC should ensure potentially damaging development is not permitted. On balance it is considered that this policy will not significantly affect the integrity of the SAC.
Policy CS21: Transport and Development	
Positive Impact	This policy will help to tackle climate change and will therefore have a positive affect by helping to protect the integrity of the SAC.
Policy CS22: Walking and Cycling	
Positive Impact	This policy will help to tackle climate change and will therefore have a positive affect by helping to protect the integrity of the SAC.
Policy CS23: Public Transport	
Positive Impact	This policy will help to tackle climate change and will therefore have a positive affect by helping to protect the integrity of the SAC.
Policy CS24: The Highway Network	
Potential Negative Impact	This policy encourages best use of the highways infrastructure to minimise the impact of traffic on the environment and communities. Increasing traffic is likely to contribute to climate change and could have an indirect affect on the SAC. However other policies will help tackle climate change, maintain air quality, reduce pollution and protect the SAC. There are no proposals to improve the highway network in the vicinity of the site. On balance it is considered that this policy will not significantly affect the integrity of the SAC.
Policy CS25: Freight	
No Impact Identified	This policy encourages an integrated system of rail, road and waterways to transport freight. Increasing traffic is likely to contribute to climate change and could have an indirect affect on the SAC. However this policy also protects and encourages alternatives to transport by road. In combination with other policies this policy should help tackle climate change, maintain air quality, reduce pollution and protect the SAC. There are no major highways, railways or waterways in the vicinity of the site.
Policy CS26: Travel Demand Management	
No Impact Identified	This policy concerns car parking and would not have any impact on the SAC.

CORE STRATEGY POLICY PREFERRED OPTIONS	
Policy CS27: Disused Railways and Waterways	
No Impact Identified	This policy prevents development of disused railways and waterways and would not have any impact on the SAC.
Policy CS28: Retailing and Town Centre Uses	
No Impact Identified	This policy relates to development in town centres and would not have any impact on the SAC.
Policy CS29: Mixed Use Development	
No Impact Identified	This policy relates to development in urban areas and would not have any impact on the SAC.
Policy CS30: Community Services and Facilities	
No Impact Identified	This policy encourages sustainable development of community services within urban areas and would not have any significant impact on the SAC.
Policy CS31: Leisure, Recreation and Open Space	
No Impact Identified	This policy encourages sustainable development of leisure and recreational facilities in urban areas, and protection of existing facilities and open space, and would not have any significant impact on the SAC.
Policy CS32: Community Safety	
No Impact Identified	This policy encourages sustainable design for community safety and would not have any impact on the SAC.
Policy CS33: Green Belt	
No Impact Identified	This policy is designed to protect the Green Belt boundary and prevent inappropriate development. As the SAC is within the Green Belt and this policy should help to protect it from inappropriate development. Where development may be acceptable its potential impact on the SAC will be assessed when the Council considers allocation of sites in the Site Specific Proposals DPD and individual planning applications. This Policy in combination with other policies to protect the SAC should ensure potentially damaging development is not permitted. On balance it is considered that this policy will not affect the integrity of the SAC.
Policy CS34: Protection and Enhancement of the Historic and Natural Environment, Landscape Character and Biodiversity	
Positive Impact	This is a positive policy to protect and enhance environmental quality including Designated Sites for ecological conservation, and will help to protect the integrity of the SAC.
Policy CS35: Environmental Impact	
Positive Impact	This is a positive policy to protect environmental quality and will help to protect the integrity of the SAC.
Policy CS36: Efficient use of Natural resources	
Positive Impact	This policy will help to tackle climate change and will therefore have a positive affect by helping to protect the integrity of the SAC.
Policy CS37: Waste management	
Positive Impact	This policy encourages waste to be dealt with in a sustainable way. In combination with other policies to protect environmental quality this policy should help tackle climate change, reduce waste and pollution, and will therefore have a positive affect by helping to protect the integrity of the SAC.
Policy CS38: Protection of Mineral Reserves other than Coal	

CORE STRATEGY POLICY PREFERRED OPTIONS	
No Impact Identified	This policy contributes to sustainability by protecting mineral reserves. Potential impact on the SAC will be assessed when the Council considers allocation of sites in the Site Specific Proposals DPD and individual planning applications. Other policies to protect the SAC and environmental quality should ensure potentially damaging development is not permitted. On balance it is considered that this policy will not significantly affect the integrity of the SAC.
Policy CS39: Provision of Minerals Other than Coal	
Potential Negative Impact	This policy encourages minerals working to be carried out in a sustainable way. Potential impact on the SAC will be assessed when the Council considers allocation of sites in the Site Specific Proposals DPD and individual planning applications. Other policies to protect the SAC and environmental quality should ensure potentially damaging development is not permitted. On balance it is considered that this policy will not significantly affect the integrity of the SAC.
Policy CS40: Coal Mining	
Potential Negative Impact	This policy encourages minerals working to be carried out in a sustainable way. Potential impact on the SAC will be assessed when the Council considers allocation of sites in the Site Specific Proposals DPD and individual planning applications. Other policies to protect the SAC and environmental quality should ensure potentially damaging development is not permitted. On balance it is considered that this policy will not significantly affect the integrity of the SAC.

Table 6 Core Strategy Policy Preferred Options

Preferred Options - Development Policies

DEVELOPMENT POLICIES PREFERRED OPTIONS

4.9 The following table sets out the potential impact of the Preferred Options Development Policies on the SAC.

DEVELOPMENT POLICY PREFERRED OPTIONS	
Policy H1: Housing Density	
No Impact Identified	This policy sets out the density of new residential development and would not have any impact on the SAC.
Policy H2: Intensification of Residential Development	
No Impact Identified	This policy encourages sustainable development by ensuring infill housing is appropriate to the site and would not have any significant on the SAC.
Policy H3: Access to Undeveloped Land	
No Impact Identified	This policy ensures that new development does not prevent access to adjoining land and would not have any impact on the SAC.
Policy H4: Open Space in Residential Areas	
No Impact Identified	This policy encourages sustainable development by ensuring adequate open space is provided for new housing developments and would not have any significant impact on the SAC.
Policy H5: Multiple Occupation of Dwellings	
No Impact Identified	This policy ensures that where housing is converted into flats/bedsits it is done in a sustainable and appropriate manner and would not have any impact on the SAC.
Policy H6: Accommodation for Gypsies, Travellers and Travelling Showpeople	
Positive Impact	This policy will ensure that adequate sites for gypsies and travellers are provided in appropriate locations. Part vii states that sites shall not be within or alongside Designated Sites of international importance and will therefore help to protect the integrity of the SAC.
Policy EMP1: Controlling the Loss of Employment Land	
No Impact Identified	This policy ensures that existing Employment Zones are retained and would not have any impact on the SAC.
Policy EMP2: Mixed Use Zones	
No Impact Identified	This policy ensures that existing Mixed Use Zones are retained and would not have any impact on the SAC.
Policy EMP3: Farm Diversification	
No Impact Identified	This policy supports sustainable development by encouraging farms to diversify. Part ii states that development must be compatible with landscape and nature conservation policies and will therefore help to protect the integrity of the SAC.
Policy EMP4: Tourist Accommodation	
Potential Negative Impact	New development will be focused in urban areas and existing settlements away from the SAC. Some very limited development may be acceptable in small rural settlements such as Middlestown, Netherton, West Bretton and Midgley. Potential impact on the SAC will be assessed when the Council considers allocation of sites in the Site Specific Proposals DPD and individual planning applications. This policy in combination with other policies should ensure potentially damaging development is

DEVELOPMENT POLICY PREFERRED OPTIONS	
	not permitted. On balance it is considered that this policy would not significantly affect the integrity of the SAC.
Policy T1: Transport and Travel	
No Impact Identified	This policy ensures that traffic can be adequately accommodated by existing highways, encourages public transport, walking and cycling, and would not have any significant impact on the SAC.
Policy GB1: Control of Development in the Green Belt	
No Impact Identified	This policy is designed to protect the Green Belt boundary and prevent inappropriate development. As the SAC is within the Green Belt and this policy should help to protect it from inappropriate development. Where development may be acceptable its potential impact on the SAC will be assessed when the Council considers allocation of sites in the Site Specific Proposals DPD and individual planning applications. This Policy in combination with other policies to protect the SAC should ensure potentially damaging development is not permitted. On balance it is considered that this policy will not significantly affect the integrity of the SAC.
Policy GB2: Location and Design of New Development in the Green Belt	
No Impact Identified	This policy is designed to protect the openness of the Green Belt . As the SAC is within the Green Belt and this policy should help to protect it from inappropriate development. Where development may be acceptable its potential impact on the SAC will be assessed when the Council considers allocation of sites in the Site Specific Proposals DPD and individual planning applications. This Policy in combination with other policies to protect the SAC should ensure potentially damaging development is not permitted. On balance it is considered that this policy will not significantly affect the integrity of the SAC.
Policy GB3: Agricultural/Forestry Workers Dwellings	
Potential Negative Impact	Even a single dwelling could potentially affect the SAC. Where development may be acceptable its potential impact on the SAC will be assessed when the Council considers allocation of sites in the Site Specific Proposals DPD and individual planning applications. This Policy in combination with other policies to protect the SAC should ensure potentially damaging development is not permitted. On balance it is considered that this policy will not significantly affect the integrity of the SAC.
Policy GB4: Development Abutting the Green Belt	
Potential Negative Impact	Even small scale development could potentially affect the SAC. Where development may be acceptable its potential impact on the SAC will be assessed when the Council considers allocation of sites in the Site Specific Proposals DPD and individual planning applications. This Policy in combination with other policies to protect the SAC should ensure potentially damaging development is not permitted. On balance it is considered that this policy will not significantly affect the integrity of the SAC.
Policy GB5: Existing Uses in the Green Belt	
Potential Negative Impact	Even small scale development could potentially affect the SAC. Where development may be acceptable its potential impact on the SAC will be assessed when the Council considers allocation of sites in the Site Specific Proposals DPD and individual planning applications. This Policy in combination with other policies to protect the SAC should ensure potentially damaging development is not permitted. On balance it is considered that this policy will not significantly affect the integrity of the SAC.
Policy GB6: Infilling Major Developed Sites in the Green Belt	
No Impact Identified	This policy applies to sites identified in the Site Specific Proposals DPD. Where development may be acceptable its potential impact on the SAC will be assessed when the Council considers allocation of sites in the Site Specific Proposals DPD

DEVELOPMENT POLICY PREFERRED OPTIONS	
	and individual planning applications. There are no Major Developed Sites within the vicinity of the SAC and this policy would not have any impact on the SAC.
Policy GB7: Redevelopment of Major Developed Sites in the Green Belt	
No Impact Identified	This policy applies to sites identified in the Site Specific Proposals DPD. Where redevelopment may be acceptable its potential impact on the SAC will be assessed when the Council considers allocation of sites in the Site Specific Proposals DPD and individual planning applications. There are no Major Developed Sites within the vicinity of the SAC and this policy would not have any impact on the SAC.
Policy SL1: Protected Areas of Search for Long Term Development (PAS)	
No Impact Identified	This policy applies to sites identified in the Site Specific Proposals DPD. Potential impact on the SAC will be assessed when the Council considers allocation of sites in the Site Specific Proposals DPD and individual planning applications. There are no PAS within the vicinity of the SAC and this policy would not have any impact on the SAC.
Policy HIS1: Development Affecting Archaeological Sites	
No Impact Identified	This policy ensures archaeological sites are protected and would not have any impact on the SAC.
Policy HIS2: Development Affecting Historic Locations	
No Impact Identified	This policy ensures Historic Parks, Gardens and Landscapes are protected and would not have any impact on the SAC.
Policy HIS3: Demolition of Historic Buildings	
No Impact Identified	This policy ensures Historic Buildings are protected and would not have any impact on the SAC.
Policy HIS4: Development Affecting Listed Buildings	
No Impact Identified	This policy ensures Listed Buildings are protected and would not have any impact on the SAC.
Policy HIS5: Development in Conservation Areas	
No Impact Identified	This policy ensures Conservation Areas are protected and would not have any impact on the SAC.
Policy HIS6: Protection of Open Space in Conservation Areas	
No Impact Identified	This policy ensures Open Space in Conservation Areas is protected and would not have any impact on the SAC.
Policy HIS 7: Development Affecting Buildings of Local Interest	
No Impact Identified	This policy ensures Buildings of Local Interest are protected and would not have any impact on the SAC.
Policy NAT1: Protected Sites of Ecological and Geological Conservation	
Positive Impact	This is a positive policy to protect and enhance biodiversity including Designated Sites for ecological conservation, and will help to protect the integrity of the SAC.
Policy NAT2: Development Affecting Protected Sites of Conservation and Species Protected by Law	
Positive Impact	This is a positive policy to protect and enhance biodiversity including Protected Species, and will help to protect the integrity of the SAC.
Policy NAT3: Ecology of Water Bodies	

DEVELOPMENT POLICY PREFERRED OPTIONS	
Positive Impact	This is a positive policy to protect and enhance biodiversity and habitat, and will help to protect the integrity of the SAC.
Policy NAT4: Wildlife Habitat Network	
Positive Impact	This is a positive policy to protect and enhance biodiversity and habitat, and will help to protect the integrity of the SAC.
Policy NAT5: Protection of Trees	
Positive Impact	This is a positive policy to protect and enhance biodiversity and habitat, and will help to protect the integrity of the SAC.
Policy NAT6: Development Affecting Trees	
Positive Impact	This is a positive policy to protect and enhance biodiversity and habitat, and will help to protect the integrity of the SAC.
Policy NAT7: Protection of Areas of Open Land	
No Impact Identified	This policy applies to sites identified in the Site Specific Proposals DPD. Potential impact on the SAC will be assessed when the Council considers allocation of sites in the Site Specific Proposals DPD and individual planning applications. There are no sites within the vicinity of the SAC and this policy would not have any impact on the SAC.
Policy NAT8: Protection of Agricultural Land	
No Impact Identified	This policy ensures that the best agricultural land is protected and would not have any impact on the SAC.
Policy NAT9: Landscape Character	
Positive Impact	This is a positive policy to protect and enhance landscape and habitat, and will help to protect the integrity of the SAC.
Policy EIC1: Drainage	
Positive Impact	This is a positive policy to ensure that sustainable drainage systems are provided in new development and will help to protect the integrity of the SAC.
Policy EIC2: Flood Risk	
No Impact Identified	This policy deals with development in Flood Zones and and would not have any impact on the SAC.
Policy EIC3: Development in Functional Floodplains	
No Impact Identified	This policy deals with development in floodplains and and would not have any impact on the SAC.
Policy EIC4: Protection of Water Quality	
Positive Impact	This is a positive policy to protect water quality and will help to protect the integrity of the SAC.
Policy EIC5: Pollution Control	
Positive Impact	This is a positive policy to avoid pollution and will help to protect the integrity of the SAC.
Policy EIC6: Air Quality	
Positive Impact	This is a positive policy to protect air quality will help to protect the integrity of the SAC.
Policy EIC7: Noise Pollution	

DEVELOPMENT POLICY PREFERRED OPTIONS	
Positive Impact	This is a positive policy to prevent noise pollution and will help to protect the integrity of the SAC.
Policy EIC8: Light Pollution	
Positive Impact	This is a positive policy to prevent light pollution and will help to protect the integrity of the SAC.
Policy EIC9: Derelict and Contaminated Land	
No Impact Identified	This policy deals with restoration of contaminated land and would not have any impact on the SAC.
Policy EIC10: Contaminated Land	
No Impact Identified	This policy deals with mitigating adverse ground conditions and would not have any impact on the SAC.
Policy EIC11: Protection from Hazardous Operations	
No Impact Identified	This policy deals with hazardous operations and would not have any impact on the SAC.
Policy EIC12: Protection from Hazardous Operations	
No Impact Identified	This policy deals with sites where there are notifiable hazardous substances and would not have any impact on the SAC.
Policy BED1: Design of New Development	
No Impact Identified	This policy ensures sustainable high quality design of new development and would not have any impact on the SAC.
Policy BED2: Landscape Design	
No Impact Identified	This policy ensures sustainable high quality landscaping of new development and would not have any impact on the SAC.
Policy BED3: Design for Safety and Security	
No Impact Identified	This policy deals with sustainable design for community safety and would not have any impact on the SAC.
Policy BED4: Extensions and Alterations to Dwellings	
No Impact Identified	This policy deals with extensions to existing dwellings and would not have any impact on the SAC.
Policy BED5: Waterfront Design	
No Impact Identified	This policy deals with design of new development alongside rivers and other bodies of water, and would not have any impact on the SAC.
Policy BED6: Cabling and Pipelines	
No Impact Identified	This policy deals with screening infrastructure in new development and would not have any impact on the SAC.
Policy BED7: Advertisements	
No Impact Identified	This policy deals with advertisements and would not have any impact on the SAC.
Policy BED8: Shopfront Design	
No Impact Identified	This policy deals with design of shop fronts and would not have any impact on the SAC.
Policy TEL1: Location, Scale and Design of Telecommunication Equipment	

DEVELOPMENT POLICY PREFERRED OPTIONS	
No Impact Identified	This policy deals with siting of telecommunications equipment. Part iv states that development must not detrimentally affect Designated Sites and will therefore help prevent harm to the integrity of the SAC.
Policy REN1: Renewable Energy	
Positive Impact	This policy will help to tackle climate change and will therefore have a positive affect by helping to protect the integrity of the SAC.
Policy REN2: Renewable Energy Generation technology	
Positive Impact	This policy will help to tackle climate change and will therefore have a positive affect by helping to protect the integrity of the SAC.
Policy REN3: Energy Efficiency and Conservation	
Positive Impact	This policy will help to tackle climate change and will therefore have a positive affect by helping to protect the integrity of the SAC.
Policy MIN1: Mineral Extraction	
No Impact Identified	This policy deals with sustainable minerals extraction. Part iii states that development must not detrimentally affect Designated Sites and will therefore help prevent harm to the integrity of the SAC.

Table 7 Development Policy Preferred Options

Submission Options - Core Strategy & Development Policies

CORE STRATEGY SPATIAL OBJECTIVES

4.10 The following table sets out the potential impact of the Core Strategy Spatial Objectives on the SAC.

CORE STRATEGY SPATIAL OBJECTIVES	
Objective 1	To ensure that all new development, activities and uses of land adhere to and promote the principles of sustainable development and enhance the quality of life for District residents.
Positive Impact	This is a positive objective promoting sustainable development which will help to protect the integrity of the SAC.
Objective 2	To meet the needs of the District by building on its strengths and the opportunities provided through good links with the wider Leeds City Region, enabling it to play a prominent role in the creation of sustainable communities, in line with the strategy and policy framework provided by the Regional Spatial strategy for Yorkshire & the Humber.
Potential Negative Impact	Development will be focused in the larger settlements and service centres away from the SAC. This objective in combination with policies to protect the SAC should ensure potentially damaging development is not permitted. On balance it is considered that this objective will not significantly affect the integrity of the SAC.
Objective 3	To locate development where it will provide the opportunity for people to satisfy their day-to-day needs for employment, shopping, education, leisure, health and other services locally or in places which minimise the need to travel and are accessible safely and conveniently by non-car modes of travel – walking, cycling, public transport. This will be achieved by: <ol style="list-style-type: none"> concentrating most new development within Wakefield, Castleford, Pontefract and other urban areas, with major developments located in the largest settlements; focusing development activity in Wakefield city, Castleford, Pontefract and other town centres, taking advantage of existing services and high levels of accessibility; allowing small scale development in local service centres, villages and rural areas which meets identified local needs or maintains the viability of local services.
Potential Negative Impact	New development will be focused within urban areas and existing settlements away from the SAC. Only very limited development may be acceptable in small rural settlements such as Middlestown, Netherton, West Bretton and Midgley. Potential impact of development on the SAC will be assessed when the Council considers allocation of sites in the Site Specific Proposals DPD and individual planning applications. This objective in combination with policies to protect the SAC should ensure potentially damaging development is not permitted. On balance it is considered that this objective will not significantly affect the integrity of the SAC.
Objective 4	To make it easier to travel around the District and the wider Leeds City Region and to access local services and amenities using sustainable transport modes (walking, cycling, public transport), by increasing transport choice and improving public transport accessibility particularly in the South East of the district.
Positive Impact	This objective will help to tackle climate change and will therefore have a positive affect by helping to protect the integrity of the SAC.
Objective 5	To provide sufficient good quality housing of the appropriate size, types, tenures and affordability to meet the identified needs of the District, in line with the housing requirement of RSS, by promoting efficient use and improvement of the existing housing stock and providing new housing in sustainable locations.

CORE STRATEGY SPATIAL OBJECTIVES	
Potential Negative Impact	New housing will be focused within urban areas and existing settlements away from the SAC. Only very limited development may be acceptable in small rural settlements such as Middlestown, Netherton, West Bretton and Midgley. Potential impact of development on the SAC will be assessed when the Council considers allocation of sites in the Site Specific Proposals DPD and individual planning applications. This objective in combination with policies to protect the SAC should ensure potentially damaging development is not permitted. On balance it is considered that this objective will not significantly affect the integrity of the SAC.
Objective 6	To create attractive, successful and accessible city and town centres by encouraging development which provides a range of services and activities which are appropriate to the function and size of the centre.
Potential Negative Impact	New development will be focused within urban areas and existing settlements away from the SAC. Only very limited development may be acceptable in small rural settlements such as Middlestown, Netherton, West Bretton and Midgley. Potential impact of development on the SAC will be assessed when the Council considers allocation of sites in the Site Specific Proposals DPD and individual planning applications. This objective in combination with policies to protect the SAC should ensure potentially damaging development is not permitted. On balance it is considered that this objective will not significantly affect the integrity of the SAC.
Objective 7	To support the growth of a dynamic local economy which increases prosperity for all sections of the community by: <ul style="list-style-type: none"> a. encouraging investment and enterprise in the district and the development of clusters of economic activity; b. building on the competitive advantages enjoyed by the district; c. the urban renaissance of Wakefield City; d. reconnecting the Coalfield Communities in the South East; e. the urban renaissance of the Five Towns; f. encouraging the diversification of the rural economy
Potential Negative Impact	Employment development will be focused within urban areas and existing settlements away from the SAC. Only very limited development may be acceptable in small rural settlements such as Middlestown, Netherton, West Bretton and Midgley. Potential impact of development on the SAC will be assessed when the Council considers allocation of sites in the Site Specific Proposals DPD and individual planning applications. This objective in combination with policies to protect the SAC should ensure potentially damaging development is not permitted. On balance it is considered that this objective will not significantly affect the integrity of the SAC.
Objective 8	To provide a range of high quality, accessible cultural, recreational and leisure opportunities across the district to improve the quality of life for residents and visitors.
Potential Negative Impact	Some leisure activities may have an impact on the SAC and proposals will be assessed when the Council considers allocation of sites in the Site Specific Proposals DPD and individual planning applications. This objective in combination with policies to protect the SAC should ensure potentially damaging development is not permitted. On balance it is considered that this objective will not significantly affect the integrity of the SAC.
Objective 9	To protect and enhance the historic heritage, character and identity of the individual settlements of the District by:

CORE STRATEGY SPATIAL OBJECTIVES	
	<ul style="list-style-type: none"> a. ensuring that the scale and location of development in each settlement is in keeping with its size, form and character; b. ensuring that the buildings and open spaces which create character are protected, maintained and enhanced; c. ensuring high quality, sustainable, design in all new development; d. retaining the Green Belt to make a clear distinction between town and country.
No Impact Identified	This objective encourages sustainable development by conservation and enhancement of the historic and built environment and would not have any significant impact on the SAC.
Objective 10	To ensure that the District's natural environment, including wildlife habitats and landscape character, is conserved and protected and that new development identifies, protects and enhances important assets and where possible creates new wildlife habitats.
Positive Impact	This objective will ensure that environmental quality and integrity of all sites of ecological importance, including the SAC, are protected.
Objective 11	To promote and maintain a clean, attractive and safe environment by reducing waste, avoiding pollution, ensuring efficient use of resources and promoting high quality design in all new development.
Positive Impact	This is a positive objective to preserve and enhance the quality of the environment and will help to protect the integrity of the SAC.
Objective 12	To reduce the impact of development on climate change by reducing greenhouse gas emissions, notably by conserving resources, and to adapt to the potential effects of climate change by managing and reducing risks, particularly flood risk.
Positive Impact	This is a positive objective to help tackle climate change and will therefore have a positive affect by helping to protect the integrity of the SAC.

Table 8 Core Strategy Spatial Objectives

CORE STRATEGY AND DEVELOPMENT POLICIES

4.11 The following table sets out the potential impact of the Core Strategy and Development Policies on the SAC.

CORE STRATEGY POLICIES	
Policy CS1: Location of Development	
Potential Negative Impact	New development will be focused in urban areas and existing settlements away from the SAC. Some very limited development may be acceptable in small rural settlements such as Middlestown, Netherton, West Bretton and Midgley. Potential impact on the SAC will be assessed when the Council considers allocation of sites in the Site Specific Proposals DPD and individual planning applications. This policy in combination with other policies should ensure potentially damaging development is not permitted. On balance it is considered that this policy would not significantly affect the integrity of the SAC.
Policy CS2: The Scale and Distribution of Additional Housing	
Potential Negative Impact	New housing will be focused in urban areas and existing settlements away from the SAC. Some very limited development may be acceptable in small rural settlements such as Middlestown, Netherton, West Bretton and Midgley. Potential impact on the SAC will be assessed when the Council considers allocation of sites in the Site Specific Proposals DPD and individual planning applications. This policy in combination with other policies should ensure potentially damaging development is not permitted. On balance it is considered that this policy would not significantly affect the integrity of the SAC.
Policy CS3: Release of Housing Land	
Potential Negative Impact	This policy encourages sustainable development by ensuring there is an adequate supply of housing land to meet the District's requirements. Sites will be allocated in the Site Specific Proposals DPD. Potential impact on the SAC will be assessed when the Council considers allocation of sites and individual planning applications. This policy in combination with other policies should ensure potentially damaging development is not permitted. On balance it is considered that this policy would not significantly affect the integrity of the SAC.
Policy CS4: Sustainable Transport	
Positive Impact	This policy encourages sustainable transport will help to tackle climate change. It will therefore have a positive affect by helping to protect the integrity of the SAC.
Policy CS5: Community Facilities and Services	
Potential Negative Impact	Community facilities and services will be focused in urban areas and existing settlements away from the SAC. Some very limited development may be acceptable in small rural settlements such as Middlestown and Netherton. Potential impact on the SAC will be assessed when the Council considers allocation of sites in the Site Specific Proposals DPD and individual planning applications. This policy in combination with other policies should ensure potentially damaging development is not permitted. On balance it is considered that this policy would not significantly affect the integrity of the SAC.
Policy CS6: Housing Mix, Affordability and Quality	
Potential Negative Impact	This policy encourages sustainable development by ensuring new housing meets local needs. Development will be focused in urban areas and existing settlements away from the SAC. Some very limited development may be acceptable in small rural settlements such as Middlestown and Netherton. Potential impact on the SAC will be assessed when the Council considers allocation of sites in the Site Specific Proposals DPD and individual planning applications. This policy in combination with other policies should ensure potentially damaging development is not permitted. On balance it is considered that this policy would not significantly affect the integrity of the SAC.

CORE STRATEGY POLICIES	
Policy CS7: Accommodation for Gypsies, Travellers and Travelling Showpeople	
Potential Negative Impact	Sites will be located at the edge of urban areas and existing settlements away from the SAC. Exceptionally limited accommodation may be acceptable in rural areas where there is an identified need. Potential impact on the SAC will be assessed when the Council considers allocation of sites in the Site Specific Proposals DPD and individual planning applications. This policy in combination with other policies should ensure potentially damaging development is not permitted. On balance it is considered that this policy would not significantly affect the integrity of the SAC.
Policy CS8: The Local Economy	
Potential Negative Impact	Employment will be focused in urban areas and existing settlements away from the SAC. Some very limited development may be acceptable in small rural settlements such as Middlestown, Netherton, West Bretton and Midgley. Potential impact on the SAC will be assessed when the Council considers allocation of sites in the Site Specific Proposals DPD and individual planning applications. This policy in combination with other policies should ensure potentially damaging development is not permitted. On balance it is considered that this policy would not significantly affect the integrity of the SAC.
Policy CS9: Transport Networks	
Potential Negative Impact	This policy encourages the best use of infrastructure across the District including alternatives to road transport. Increasing traffic is likely to contribute to climate change and could have an indirect affect on the SAC. Potential impact on the SAC will be assessed when the Council considers allocation of sites in the Site Specific Proposals DPD and individual planning applications. This policy in combination with other policies to protect environmental quality should ensure that potentially damaging development is not permitted. On balance it is considered that this policy would not significantly affect the integrity of the SAC.
Policy CS10: Design, Safety and Environmental Quality	
Positive Impact	This is a positive policy to protect and enhance environmental quality including Designated Sites of International, National and Regional importance in part d, and will help to protect the integrity of the SAC.
Policy CS11: Leisure, Recreation and Open Space	
Potential Negative Impact	This policy encourages sustainable development of leisure and recreational facilities in urban areas and existing settlements away from the SAC. Some very limited development may be acceptable in small rural settlements such as Middlestown, Netherton, West Bretton and Midgley. Potential impact on the SAC will be assessed when the Council considers allocation of sites in the Site Specific Proposals DPD and individual planning applications. This policy in combination with other policies should ensure potentially damaging development is not permitted. On balance it is considered that this policy would not significantly affect the integrity of the SAC.
Policy CS12: Green Belt	
Potential Negative Impact	The SAC is within the Green Belt and even small scale development could potentially affect the SAC. Where development may be acceptable its potential impact on the SAC will be assessed when the Council considers allocation of sites in the Site Specific Proposals DPD and individual planning applications. This Policy in combination with other policies to protect the SAC should ensure potentially damaging development is not permitted. On balance it is considered that this policy will not significantly affect the integrity of the SAC.
Policy CS13: Environmental Impact and Efficient Use of Resources	
Positive Impact	This policy will help to tackle climate change and will therefore have a positive affect by helping to protect the integrity of the SAC.

CORE STRATEGY POLICIES	
Policy CS14: Influencing the Demand for Travel	
No Impact Identified	This policy concerns car parking and would not have any impact on the SAC.
Policy CS15: Waste Management	
Potential Negative Impact	This policy encourages waste to be dealt with in a sustainable way through reduction and recycling. Sites for waste management facilities will be focused in urban areas and existing settlements away from the SAC. Where development may be acceptable its potential impact on the SAC will be assessed when the Council considers allocation of sites in the Site Specific Proposals DPD and individual planning applications. This Policy in combination with other policies to protect the SAC should ensure potentially damaging development is not permitted. On balance it is considered that this policy will not significantly affect the integrity of the SAC.
Policy CS16: Minerals	
Potential Negative Impact	This policy encourages mineral extraction to be dealt with in a sustainable way. Where development may be acceptable its potential impact on the SAC will be assessed when the Council considers allocation of sites in the Site Specific Proposals DPD and individual planning applications. This Policy in combination with other policies to protect the SAC should ensure potentially damaging development is not permitted. On balance it is considered that this policy will not significantly affect the integrity of the SAC.

Table 9 Core Strategy Policies Submission

DEVELOPMENT POLICIES	
Policy D1: Housing Density	
Potential Negative Impact	This policy sets out the density of new residential development which will be focused in urban areas and existing settlements away from the SAC. Some very limited development may be acceptable in small rural settlements such as Middlestown, Netherton, West Bretton and Midgley. Potential impact on the SAC will be assessed when the Council considers allocation of sites in the Site Specific Proposals DPD and individual planning applications. This policy in combination with other policies should ensure potentially damaging development is not permitted. On balance it is considered that this policy would not significantly affect the integrity of the SAC.
Policy D2: Housing in Rural Areas	
Potential Negative Impact	Only very limited housing may be acceptable in small rural settlements such as Middlestown, Netherton, West Bretton and Midgley. Potential impact on the SAC will be assessed when the Council considers allocation of sites in the Site Specific Proposals DPD and individual planning applications. This policy in combination with other policies should ensure potentially damaging development is not permitted. On balance it is considered that this policy would not significantly affect the integrity of the SAC.
Policy D3: Dwellings for Agricultural and Forestry Workers	
Potential Negative Impact	The SAC is within the Green Belt and even small scale development could potentially affect the SAC. Where development may be acceptable its potential impact on the SAC will be assessed when the Council considers allocation of sites in the Site Specific Proposals DPD and individual planning applications. This Policy in combination with other policies to protect the SAC should ensure potentially damaging development is not permitted. On balance it is considered that this policy will not significantly affect the integrity of the SAC.
Policy D4: Windfall Housing	
Potential Negative Impact	New housing will be focused in urban areas and existing settlements away from the SAC. Some very limited development may be acceptable in small rural settlements such as Middlestown, Netherton, West Bretton and Midgley. Potential impact on the SAC will be assessed when the Council considers allocation of sites in the Site Specific Proposals DPD and individual planning applications. This policy in combination with other policies should ensure potentially damaging development is not permitted. On balance it is considered that this policy would not significantly affect the integrity of the SAC.
Policy D5: Access to Undeveloped Land	
No Impact Identified	This policy ensures that new development does not prevent access to adjoining land and would not have any significant impact on the SAC.
Policy D6: Safeguarded Land (Protected Areas of Search - PAS)	
No Impact Identified	This policy applies to sites identified in the Site Specific Proposals DPD. Potential impact on the SAC will be assessed when the Council considers allocation of sites in the Site Specific Proposals DPD and individual planning applications. There are no PAS within the vicinity of the SAC and this policy would not have any impact on the SAC.
Policy D7: Affordable Housing	
No Impact Identified	This policy encourages sustainable development by ensuring that affordable housing is provided in new residential developments and would not have any significant impact on the SAC.
Policy D8: Affordable Housing on Exception Sites	
Potential Negative Impact	This policy encourages sustainable development by ensuring that housing meets local needs. Some very limited development may be acceptable in small rural settlements

DEVELOPMENT POLICIES	
	such as Middlestown, Netherton, West Bretton and Midgley. Potential impact on the SAC will be assessed when the Council considers allocation of sites in the Site Specific Proposals DPD and individual planning applications. This policy in combination with other policies should ensure potentially damaging development is not permitted. On balance it is considered that this policy would not significantly affect the integrity of the SAC.
Policy D9: Protecting Employment Land	
No Impact Identified	This policy relates to Employment Zones which are within large settlements and urban areas away from the SAC and would not have any impact on the SAC.
Policy D10: Sites Designated for Biological and Geological Conservation	
Positive Impact	This is a positive policy to protect and enhance biodiversity including Designated Sites, and will help to protect the integrity of the SAC.
Policy D11: Ecological Protection of Watercourses and Water Bodies	
Positive Impact	This is a positive policy to protect and enhance biodiversity and habitat, and will help to protect the integrity of the SAC.
Policy D12: Wildlife Habitat Network	
Positive Impact	This is a positive policy to protect and enhance biodiversity and habitat, and will help to protect the integrity of the SAC.
Policy D13: Protection of Trees and Ancient Woodland	
Positive Impact	This is a positive policy to protect and enhance biodiversity and habitat, and will help to protect the integrity of the SAC.
Policy D14: Landscape Character	
Positive Impact	This is a positive policy to protect and enhance landscape and habitat, and will help to protect the integrity of the SAC.
Policy D15: Design of New Development	
No Impact Identified	This policy ensures sustainable high quality design of new development and would not have any impact on the SAC.
Policy D16: Extensions and Alterations to Dwellings	
No Impact Identified	This policy deals with extensions to existing dwellings and would not have any impact on the SAC.
Policy D17: Waterfront Design	
No Impact Identified	This policy deals with design of new development alongside rivers and other bodies of water, and would not have any impact on the SAC.
Policy D18: Landscape Design	
No Impact Identified	This policy ensures sustainable high landscaping of new development and would not have any impact on the SAC.
Policy D19: Protected Areas of Open Land	
No Impact Identified	This policy safeguards areas of open land which are allocated in the Site Specific Proposals DPD. Potential impact on the SAC will be assessed when the Council considers allocation of sites in the Site Specific Proposals DPD and individual planning applications. There are no sites proposed within the vicinity of the SAC and this policy would not have any impact on the SAC.
Policy D20: Open Space in Residential Areas	

DEVELOPMENT POLICIES	
No Impact Identified	This policy encourages sustainable development by ensuring adequate open space is provided for new housing developments and would not have any impact on the SAC.
Policy D21: Access and Highway Safety	
No Impact Identified	This policy deals with sustainable development by ensuring new development is accessible and would not have any significant impact on the SAC.
Policy D22: Safety and Security Through Design	
No Impact Identified	This policy deals with sustainable design for community safety and would not have any impact on the SAC.
Policy D23: Shopfront Design and Advertisements	
No Impact Identified	This policy deals with design of shopfronts and advertisements and would not have any impact on the SAC.
Policy D24: Location, Scale and Design of Telecommunications Equipment	
No Impact Identified	This policy deals with siting of telecommunications equipment. Part e ensures that development would not detrimentally affect Designated Sites and will therefore help prevent harm to the integrity of the SAC.
Policy D25: Development Affecting Archaeological Sites	
No Impact Identified	This policy ensures archaeological sites are protected and would not have any impact on the SAC.
Policy D26: Development Affecting Historic Locations	
No Impact Identified	This policy ensures Historic parks, Gardens and Landscapes are protected and would not have any impact on the SAC.
Policy D27: Development Affecting Listed Buildings	
No Impact Identified	This policy ensures Listed Buildings are protected and would not have any impact on the SAC.
Policy D28: Development in Conservation Areas	
No Impact Identified	This policy ensures Conservation Areas are protected and would not have any impact on the SAC.
Policy D29: Development Affecting Buildings of Local Interest	
No Impact Identified	This policy ensures Buildings of Local Interest are protected and would not have any impact on the SAC.
Policy D30: Pollution Control	
Positive Impact	This is a positive policy to protect environmental quality and will help protect the integrity of the SAC.
Policy D31: Light Pollution	
Positive Impact	This is a positive policy to protect environmental quality and will help protect the integrity of the SAC.
Policy D32: Protection from Hazardous Operations	
No Impact Identified	This policy deals with hazardous operations and would not have any impact on the SAC.
Policy D33: Contaminated Land	
No Impact Identified	This policy deals with restoration of contaminated land and mitigation of adverse ground conditions, and would not have any impact on the SAC.

DEVELOPMENT POLICIES	
Policy D34: Existing Uses in the Green Belt	
Potential Negative Impact	The SAC is within the Green Belt and even small scale development could potentially affect the SAC. Where development may be acceptable its potential impact on the SAC will be assessed when the Council considers allocation of sites in the Site Specific Proposals DPD and individual planning applications. This Policy in combination with other policies to protect the SAC should ensure potentially damaging development is not permitted. On balance it is considered that this policy will not significantly affect the integrity of the SAC.
Policy D35: Surface Water Drainage	
Positive Impact	This is a positive policy which will help protect the integrity of the SAC.
Policy D36: Flood Risk	
Positive Impact	This is a positive policy which will help protect the integrity of the SAC.
Policy D37: Protection of Agricultural Land	
No Impact Identified	This policy ensures that the best agricultural land is protected and would not have any impact on the SAC.
Policy D38: Renewable Energy	
Positive Impact	This policy will help to tackle climate change and will therefore have a positive affect by helping to protect the integrity of the SAC. Part b ensures that renewable energy development would not detrimentally affect Designated Sites.
Policy D39: Renewable Energy Generation Technology	
Positive Impact	This policy will help to tackle climate change and will therefore have a positive affect by helping to protect the integrity of the SAC.
Policy D40: Sustainable Construction and Efficient Use of Resources	
Positive Impact	This policy will help to tackle climate change and will therefore have a positive affect by helping to protect the integrity of the SAC.

Table 10 Development Policies Submission

5 Conclusions and Recommendations

- 5.1 The tables highlight where there may be a potential risk of an option or policy having an impact on the integrity of Denby Grange Colliery Ponds SAC. Risks have been identified using a precautionary approach, any policies or proposals for development could potentially have an impact, although this will depend on the type of development and its location in relation to the SAC. All the objectives, policies or proposals for development in the Core Strategy and Development Policy DPDs have been assessed.
- 5.2 Objectives and policies which are likely to have a significant adverse impact on the SAC have been rejected. Those objectives and policies which could potentially have an impact were considered carefully, but were not rejected where, in combination with other policies, harm to the integrity of the the SAC would be avoided. For example Submission Development Policy D2 Housing in Rural Areas allows limited housing development in villages within the 2km buffer zone. Any such development could have an impact on the SAC however those positive policies that protect ecology and the environment will ensure that no development or allocation of sites for development in the Site Specific Proposals DPD will be permitted that could have an adverse affect on the integrity of the SAC.
- 5.3 The Council has consulted Natural England, the Environment Agency and Kirklees Council whilst preparing this document. Both policies and this document have been amended in view of the comments made and full details are given in the following Appendix.
- 5.4 In conclusion, the majority of the objectives, policies and proposals will not have any impact upon the integrity of the SAC. Some objectives and proposals have been identified as likely to have an impact on the SAC, however when considered in combination with policies to safeguard the District's Designated Sites, ecology and the environment, there will not be any adverse affect. Stages 3 and 4 ⁽⁵⁾ of AA are therefore rendered unnecessary. The Council is accordingly satisfied that the Core Strategy and Development Policies DPDs can be implemented without adversely affecting the integrity of Denby Grange Colliery Ponds SAC.

5 see page 2

Appendix 1 Council's Response to Consultation

Consultation on the Draft Appropriate Assessment

Consultations on the draft AA were carried out in February and March 2007. The following bodies were consulted:

- Natural England, responded with comments and recommendations;
- Environment Agency, confirmed that they had no comments;
- Kirklees Metropolitan Council, no response.

Summary of Comments from Natural England on Preferred Options and Submission Draft Policies

The following tables set out Natural England's comments where they consider that there are likely to be significant effects on the SAC. Policies where there are no likely significant effects are not included in the tables. The Council's response is given below with policy specific responses and amendments set out below the relevant table.

Council's Response to Natural England's comments

Natural England have suggested that additional clauses about protecting international and other Designated Sites should be added to some policies. The Council considers that where there are existing policies for protecting ecological and geological conservation (such as CS34, NAT1-8) then it is not necessary or appropriate to duplicate these by adding additional clauses to other policies. This concurs with advice from Government Office. The majority of the policies have been amended and updated to improve them following Preferred Options and Submission Draft consultations in view of comments from various bodies, including Natural England.

Policy	Natural England's view	Comments
Core Strategy Objectives	General and wide ranging potential for likely significant effect on some of the objectives, but none are locationally specific and can all be taken forward without impacting on the SAC	With a strengthened Policy CS34, no further assessment necessary.
CS1	General and wide ranging potential for likely significant effect	With a strengthened Policy CS34, no further assessment necessary.
CS5	General and wide ranging potential for likely significant effect - indirect effects	With a strengthened Policy CS34, no further assessment necessary.
CS6	General and wide ranging potential for likely significant effect - indirect effects	With a strengthened Policy CS34, no further assessment necessary.
CS7	General and wide ranging potential for likely significant effect - indirect effects	With a strengthened Policy CS34, no further assessment necessary.
CS9	Likely significant effect. The SAC is in the Green Belt and additional housing in the vicinity of the SAC has the potential to indirectly affect the site in terms of disturbance, pollution, loss of supporting habitat, etc.	Avoidance measure should be applied in the form of an additional point <i>h) it can be demonstrated that the development will not adversely affect sites of wildlife importance</i>
CS15	General and wide ranging potential for likely significant effect	With a strengthened Policy CS34, no further assessment necessary.
CS16	General and wide ranging potential for likely significant effect	With a strengthened Policy CS34, no further assessment necessary.
CS17	Likely significant effect. Development in rural areas could have indirect, and possibly direct impacts on the SAC	Avoidance measure should be applied as amended policy wording <i>...should not have an adverse effect on the local environment</i>

Policy	Natural England's view	Comments
		<i>or amenity, including European wildlife sites, and should accord with...</i>
CS20	General and wide ranging potential for likely significant effect	With a strengthened Policy CS34, no further assessment necessary.
CS24	General and wide ranging potential for likely significant effect	With a strengthened Policy CS34, no further assessment necessary.
CS25	General and wide ranging potential for likely significant effect	With a strengthened Policy CS34, no further assessment necessary.
CS33	Likely significant effect. Development in the Green Belt, even though only in exceptional cases, may affect the SAC	Avoidance measure should be applied as amended policy wording: add in a reference to Core Strategy Policy CS34 at second point, along with other policies and controls referred to.
CS34	Likely significant effect. Policy requires strengthening in order to adequately protect European and international wildlife sites.	Avoidance measure should be applied as amended policy wording added to the end of point 5 ...must be provided. Proposals that cannot demonstrate that there will not be an adverse effect on any European or International wildlife site will not be supported.
CS37	General and wide ranging potential for likely significant effect	With a strengthened Policy CS34, no further assessment necessary.
CS38	The assessment needs to demonstrate that the minerals allocations will not adversely affect the SAC	Further assessment necessary - clarification needed that the minerals reserves identified in their allocation will not adversely affect the SAC.
CS39	General and wide ranging potential for likely significant effect	With a strengthened Policy CS34, no further assessment necessary.
CS40	General and wide ranging potential for likely significant effect	With a strengthened Policy CS34, no further assessment necessary.

Table 11 Core Strategy Preferred Options

Council's Response to Natural England's comments

1. Policy CS9 has been amended and replaced by Submission Draft Policy D3.
2. Policy CS17 has been amended and replaced by Submission Draft Policy CS7 and D11.
3. Policy CS34 has been amended and strengthened and is replaced by Submission Draft Policy CS9.
4. Policy CS38 minerals reserves will be identified in the Site Specific Proposals DPD and assessment of their impact on the SAC will be carried out during the preparation of the Sites document.

Policy	Natural England's view	Comments
H6	Minor wording amendment to capture indirect effects that may occur even if the designated site and development site are further apart, eg recreational impacts	Minor wording amendment as follows: <i>vi. is not within the Green Belt, or within, alongside or likely to harm a designated site of international...</i>
EMP4	General and wide ranging potential for likely significant effect	With a strengthened Policy NAT1, no further assessment necessary.

Policy	Natural England's view	Comments
GB1	General and wide ranging potential for likely significant effect with the development types listed	With a strengthened Policy NAT1, no further assessment necessary.
GB3	Likely significant effect.	Avoidance measure of additional point should be applied: <i>vi designated sites of international, national or local importance for nature conservation will not be adversely affected.</i>
GB4	General and wide ranging potential for likely significant effect with the development types listed	With a strengthened Policy NAT1, no further assessment necessary.
GB5	General and wide ranging potential for likely significant effect	With a strengthened Policy NAT1, no further assessment necessary.
GB6	General and wide ranging potential for likely significant effect with the development types listed	With a strengthened Policy NAT1, no further assessment necessary.
GB7	General and wide ranging potential for likely significant effect with the development types listed	With a strengthened Policy NAT1, no further assessment necessary.
NAT1	Likely significant effect. Policy requires strengthening to ensure that it can be ascertained that the plan will not result in adverse effects	Additional wording to the end of the policy after bullet points: <i>Development proposals that are not able to demonstrate that they will not have an adverse effect on the integrity of a European or international wildlife site will not be permitted.</i>
REN1	Minor wording amendment to include ecological interests as well as landscape and historical	Minor wording amendment: <i>i. the development will not adversely affect the character of the landscape or areas of historical or ecological interest...</i>

Table 12 Development Policies Preferred Options

Council's Response to Natural England's comments

1. Policy H6 has been amended and is replaced by Submission Draft Policy D9.
2. Policy GB3 has been amended and is replaced by Submission Draft Policy D12.
3. Policy NAT1 has been amended and is replaced by Submission Draft Policy D13, D14 and D15. International and European Designations are covered in paragraph 4.73 of the policy justification, a specific policy on International and European Designations is not necessary because these are protected by law.
4. Policy REN1 has been amended and is replaced by Submission Draft Policy D52.

Policy	Natural England's view	Comments
Core Strategy Objectives	General and wide ranging potential for likely significant effect on some of the objectives, but none are locationally specific and can all be taken forward without impacting on the SAC	With a strengthened Policy CS9, no further assessment necessary.
CS1	General and wide ranging potential for likely significant effect	With a strengthened Policy CS9, no further assessment necessary.

Policy	Natural England's view	Comments
CS2	General and wide ranging potential for likely significant effect	With a strengthened Policy CS9, no further assessment necessary.
CS3	General and wide ranging potential for likely significant effect	With a strengthened Policy CS9, no further assessment necessary.
CS7	General and wide ranging potential for likely significant effect	With a strengthened Policy CS9, no further assessment necessary.
CS8	General and wide ranging potential for likely significant effect	With a strengthened Policy CS9, no further assessment necessary.
CS9	Likely significant effect.	Additional wording necessary at the end of point d. ... <i>the district's biological and geological diversity particularly ensuring that sites of international, national and local interest are not adversely affected.</i>
CS14	General and wide ranging potential for likely significant effect - new waste sites may indirectly affect the SAC with increased disturbance, predators, pollution etc	Policy is not locationally specific, so with a strengthened Policy CS9, no further assessment necessary.
CS15	General and wide ranging potential for likely significant effect - new minerals extraction or recycling sites may indirectly affect the SAC with increased disturbance, pollution etc	Policy is not locationally specific, so with a strengthened Policy CS9, no further assessment necessary.

Table 13 Core Strategy Submission Draft

Council's Response to Natural England's comments

1. Submission Draft Policy CS9 has been amended and replaced by Submission Policy CS10.

Policy	Natural England's view	Comments
D2	The policy is directing some housing close to the SAC, although at low level	Additional wording to be added at the end of policy; ... <i>employment and community uses before residential, and that the development does not adversely affect the natural, historic or built environment.</i>
D3	General and wide ranging potential for likely significant effect	Policy is not locationally specific, so with a strengthened Policy D13 no further assessment necessary.
D9	General and wide ranging potential for likely significant effect	With a strengthened Policy D13 no further assessment necessary.
D12	Likely significant effect - potentially focusing new development close to the SAC	Avoidance measure of additional point should be applied: <i>f. the development will not adversely affect the natural, historic or built environment.</i>
D13	Likely significant effect. This policy does not cover European or international wildlife sites. There is no need to repeat legislation wording, but avoidance wording is necessary in order to ensure the plan does not have any adverse effect	Additional wording as a second paragraph in the policy: <i>Development proposals that are not able to demonstrate that they will not have an adverse effect on the integrity of a European or international wildlife site will not be permitted.</i>

Policy	Natural England's view	Comments
D45	General and wide ranging potential for likely significant effect	With a strengthened Policy D13 no further assessment necessary.
D46	General and wide ranging potential for likely significant effect. Policy is not locationally specific, but the enclosure and landscaping requirements could impact on the SAC in close proximity	Not locationally specific, so with a strengthened Policy D13 no further assessment necessary.
D47	General and wide ranging potential for likely significant effect	With a strengthened Policy D13 no further assessment necessary.
D48	General and wide ranging potential for likely significant effect	With a strengthened Policy D13 no further assessment necessary.

Table 14 Development Policies Submission Draft

Council's Response to Natural England's comments

1. Submission Draft Policy D2 has been amended and replaced by Submission Policy D2.
2. Submission Draft Policy D12 has been amended and replaced by Submission Policy D3.
3. Submission Draft Policy D13 has been amended and replaced by Submission Policy D10. The wording suggested while not appropriate for the policy itself is covered by paragraph 4.73 of the policy justification.

Appropriate Assessment and Consultation on the Revised Submission Policies

Following comments made by Natural England, policies in the Submission Draft Core Strategy and Development Policies documents were amended (as set out above). Revised Submission Core Strategy and Development Policies documents have been produced and a revised AA was then undertaken (which is set out in the tables in Section 4 of this document). Natural England were re-consulted on these documents during September and October 2007.

Summary of Comments from Natural England

The wording of section 5.2 is not clear and should be replaced with *"Any such development could have an impact on the SAC however those positive policies that protect ecology and the environment will ensure that no development or allocation of sites for development in the Site Specific Proposals DPD will be permitted that could have an adverse affect on the integrity of the SAC"*. If this clarification is made then Natural England will be able to agree with the Council's assessment that the Core Strategy and Development Policies DPDs can be implemented without adversely affecting the integrity of Denby Grange Colliery Ponds SAC.

Council's Response to Natural England's comments

The wording in section 5.2 has been amended as suggested.