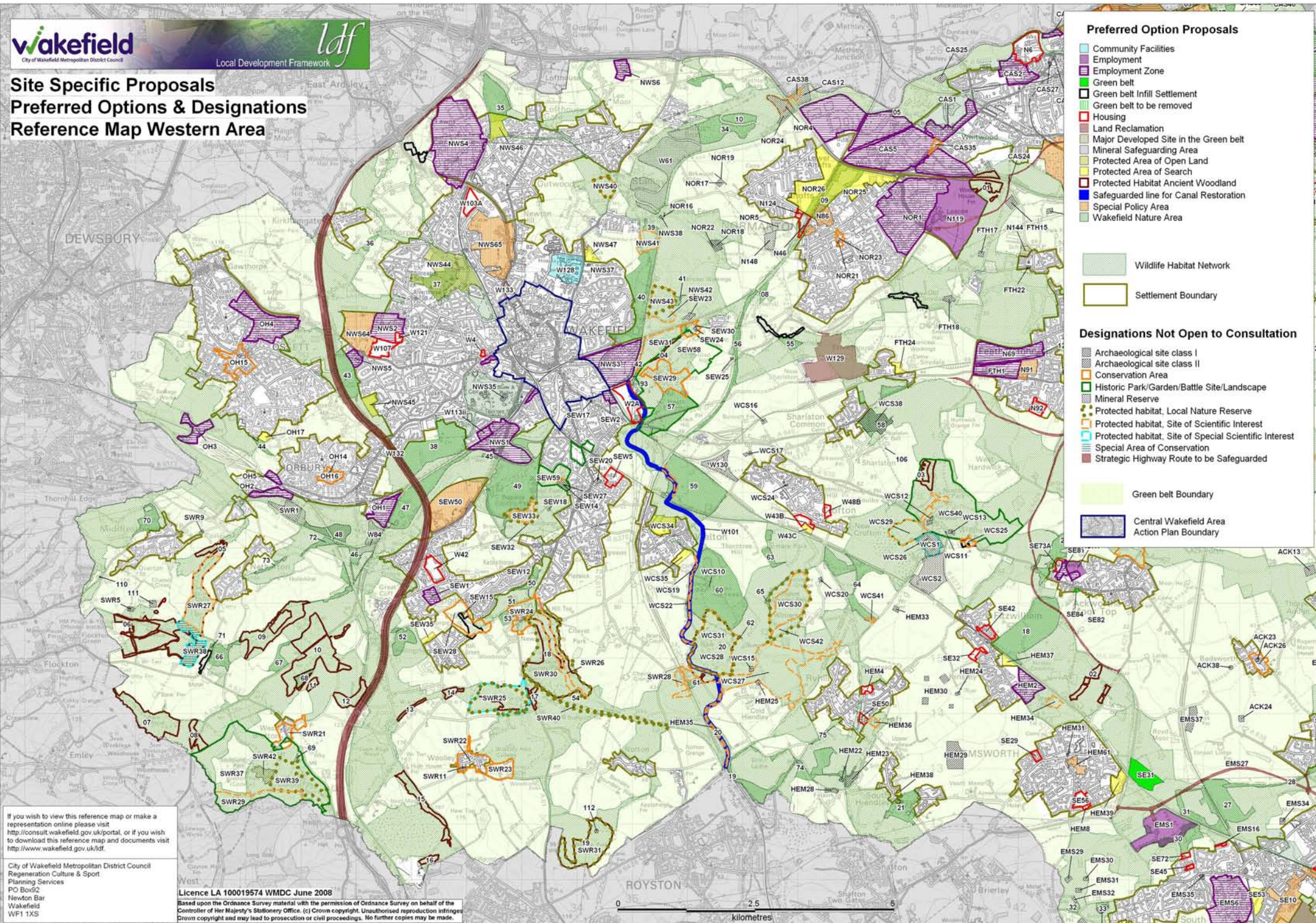


**Site Specific Proposals  
Preferred Options & Designations  
Reference Map Western Area**



- Preferred Option Proposals**
- Community Facilities
  - Employment
  - Employment Zone
  - Green belt
  - Green belt Infill Settlement
  - Green belt to be removed
  - Housing
  - Land Reclamation
  - Major Developed Site in the Green belt
  - Mineral Safeguarding Area
  - Protected Area of Open Land
  - Protected Area of Search
  - Protected Habitat Ancient Woodland
  - Safeguarded line for Canal Restoration
  - Special Policy Area
  - Wakefield Nature Area
- 
- Wildlife Habitat Network
  - Settlement Boundary
- 
- Designations Not Open to Consultation**
- Archaeological site class I
  - Archaeological site class II
  - Conservation Area
  - Historic Park/Garden/Battle Site/Landscape
  - Mineral Reserve
  - Protected habitat, Local Nature Reserve
  - Protected habitat, Site of Scientific Interest
  - Protected habitat, Site of Special Scientific Interest
  - Special Area of Conservation
  - Strategic Highway Route to be Safeguarded
- 
- Green belt Boundary
  - Central Wakefield Area Action Plan Boundary

If you wish to view this reference map or make a representation online please visit <http://iconsult.wakefield.gov.uk/portal>, or if you wish to download this reference map and documents visit <http://www.wakefield.gov.uk/ldf>

City of Wakefield Metropolitan District Council  
Regeneration Culture & Sport  
Planning Services  
PO Box 62  
Newton Bar  
Wakefield  
WF1 1XS

Licence LA 100019574 WMDC June 2008  
Based upon the Ordnance Survey material with the permission of Ordnance Survey on behalf of the Controller of Her Majesty's Stationery Office. (c) Crown copyright. Unauthorised reproduction infringes Crown copyright and may lead to prosecution or civil proceedings. No further copies may be made.

